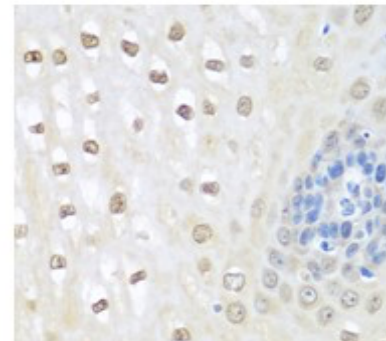
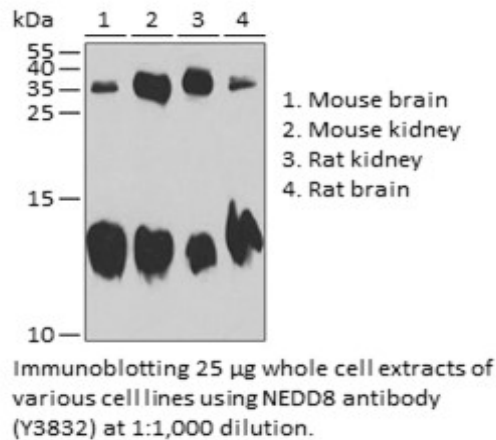


Product Name: NEDD8 Rabbit pAb
Catalog #: Y3832-20; Y3832-100
Also Known As: NEDD8; NEDD-8
Quantity: 20 µl for Y3832-20; 100 µl for Y3832-100
Concentration: See labels on tube
Host Species: Rabbit
Isotype: IgG
Reactivity: Human, Mouse, Rat
Immunogen: Recombinant fusion protein containing a sequence corresponding to amino acids 1-81 of human NEDD8 (NP_006147.1).
Swiss Prot. #: Q15843
Calculated MW: 9 kDa
Detected MW: 12 kDa
Applications: WB (1:500 - 1:2,000)
 IHC (1:50 - 1:100)
 IP (not tested)
 IF (not tested)
 Note: Antibody dilution should be optimized by users.

Images:



Immunoblotting 25 µg whole cell extracts of various cell lines using NEDD8 antibody (Y3832) at 1:1,000 dilution.

Immunohistochemistry of paraffin-embedded human esophagu using NEDD8 antibody (Y3832) at 1:100 dilution.

Purification: Protein A or G affinity purification
Buffer: PBS with 0.02% sodium azide, 50% glycerol, pH7.3
Storage: Store at -20°C. Centrifuge to maximize product recovery.
Background: NEDD8 is a member of the ubiquitin-like protein family. The covalent attachment of NEDD8 to target proteins, termed neddylation, is a reversible, multi-step process analogous to ubiquitination.
Reference:
 1. Chow N, et al. (1996) J Biol Chem 271, 11339 - 11346.
 2. Osaka F, et al. (1998) Genes Dev 12, 2263 - 2268.
 3. Schwartz DC and Hochstrasser M, (2003) Trends Biochem Sci 28, 321 - 328.
Note: This product is for research use only.