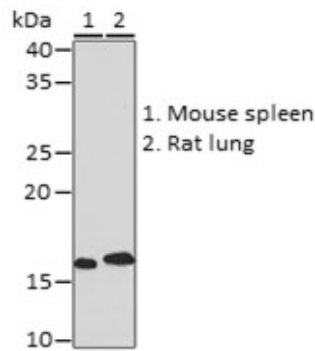
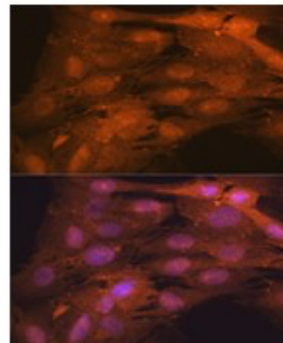


Product Name: ISG15 Rabbit mAb
Catalog #: Y3810-20; Y3810-100
Also Known As: ISG15; G1P2; IFI15; IMD38; IP17; UCRP; hUCRP
Quantity: 20 µl for Y3810-20; 100 µl for Y3810-100
Concentration: See labels on tube
Host Species: Rabbit
Isotype: IgG
Reactivity: Human, Mouse, Rat
Immunogen: A synthesized peptide derived from human ISG15.
Swiss Prot. #: P05161
Calculated MW: 18 kDa
Detected MW: 16 kDa
Applications: WB (1:500 - 1:2,000)
IF (1:50 - 1:200)
IP (not tested)
IHC (not tested)
Note: Antibody dilution should be optimized by users.

Images:



Immunoblotting 25 µg whole cell extracts of various cell lines using ISG15 antibody (Y3810) at 1:1,000 dilution.



Immunofluorescence of C6 cells using ISG15 antibody (Y3810) at 1:100 dilution. Blue: DAPI nuclear staining.

Purification: Protein A or G affinity purification
Buffer: PBS with 0.02% sodium azide, 0.05% BSA, 50% glycerol, pH7.3
Storage: Store at -20°C. Centrifuge to maximize product recovery.
Background: ISG15 is a member of the ubiquitin-like protein family, also known as ubiquitin cross-reactive protein (UCRP). It is conjugated to intracellular target proteins upon activation by interferon-alpha and interferon-beta, acting both as an extracellular cytokine and an intracellular protein modifier.
Reference: 1. Meraro D, et al. (2002) J Immunol 168, 6224 - 6231.
2. Ritchie KJ and Zhang DE, (2004) Semin Cell Dev Biol 15, 237 - 246.