

Anti-MBP

Cat. # Y1000, Y1001

Also Known as: Anti-Maltose-binding Protein Mouse Monoclonal Antibody
Isotype: Mouse IgG2b
Clone MBP61R
MW: ~55/25 kDa
Species: Recognizes MBP or MBP fusion proteins
Immunogen: Recombinant MBP
Concentration: 1 mg/ml
Buffer 10 mM PBS (pH 7.2), 10% Glycerol, 0.09% NaN₃ (sodium azide)
Specificity: Recognizes MBP or MBP fusion proteins
Purification: Protein A affinity chromatography
Applications: WB, IP, ELISA, IS
Quality Assurance: Guaranteed for detecting 5 - 50ng recombinant MBP or MBP-fusion proteins at an antibody dilution of 1:1,000 using regular ECL
Recommended WB (with ECL): 1:1000 dilution
Working Conditions: IF: 1:500
IP: 2 - 5ug antibody per reaction
For best results of IP, WB and IS, and other assays (e.g.: Dot and ELISA), please determine optimal working dilution by titration test

Images:

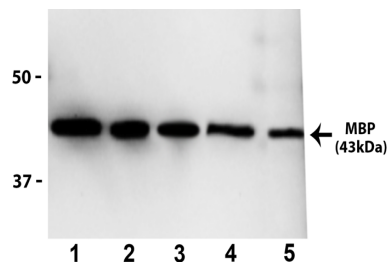


Figure 1 : Western blot application.
1:2000 (0.5µg/mL) Ab dilution
probed recombinant MBP: 50ng (lane 1), 24ng (lane 2), 12ng (lane 3), 6ng

Storage: Store at -20°C. Avoid multiple freez-thaw cycles.

Note:

