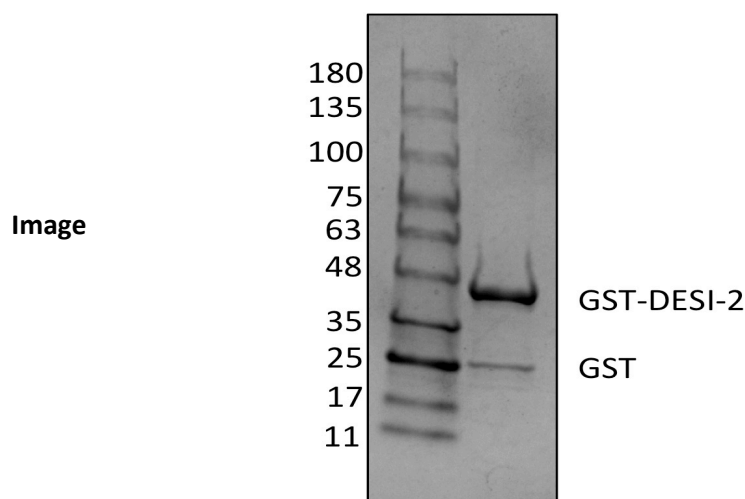


## GST-DESI-2

Cat. # H8970

**Also Known as:** PPPDE1  
**NCBI Reference:** NM\_016076.4  
**MW (no tag):** 21.4 kDa  
**Species:** Human  
**Source:** Bacterial recombinant  
**Tag:** None  
**Stock Buffer:** 20 mM Tris. pH 7.1 at 37 °C. 150 mM NaCl. 2 mM BME. 10% Glycerol  
**Concentration:** See tube label  
**Quality Assurance:** ~ 85% purify by SDS-PAGE

Coomassie stained SDS-PAGE of 5 ug GST-DESI-2.



**Description:** DESI-2 (desumoylating isopeptidase 2, also called Permuted Papain fold Peptidases of DsRNA viruses and Eukaryotes (PPPDE1)) and DESI-1 (also called PPPDE2) contain a Ub-binding domain and a cysteine protease domain. They catalyze both desumolyating and deubiquitinating activities.

**Storage:** Keep at -80 °C freezer. avoid multiple freeze/thaw cycles.

**Note:** N/A

**Literature:**

1. L.M. Iyer, et al., Cell cycle 3 (2004) 1440e1450.
2. E.J. Shin, et al., EMBO Rep. 13 (2012) 339e346.
3. J. Gillies, et al., EMBO Rep. 13 (2012) 284e285
4. X. Xie, et al., Biochem Biophys Res Commun. 2017 488(2):291-296.