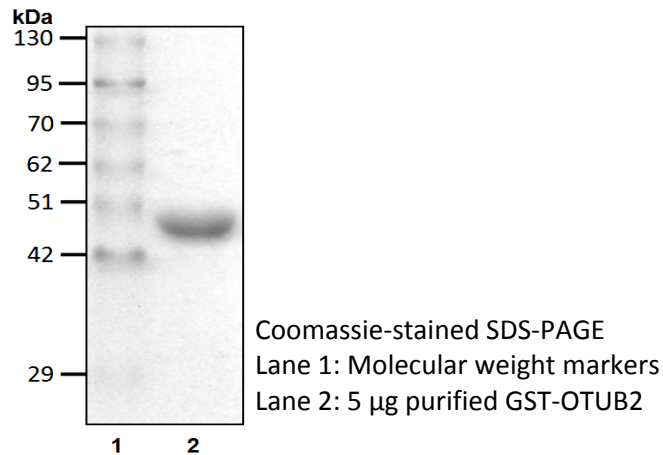


GST-OTUB2

Cat. # H3110,H3111

Also Known as: OTB2; OTU2; C14orf137
NCBI Reference: NM_023112
MW (no tag): 27.2 kDa
Species: Human
Source: Bacterial recombinant
Tag: GST
Stock Buffer: 20 mM Tris, 150 mM NaCl, 2 mM β ME, 10% Glycerol
Concentration: See tube label
Quality Assurance: ~95% by SDS-PAGE

Image



Description: Deubiquitinating enzymes (DUBs) are proteases that possess the ability to cleave ubiquitin chains or the isopeptide bond that conjugates ubiquitin with a substrate. Human cells have approximately 100 DUBs that play important roles in regulating various cellular events. OTUB2 is a member of the ovarian tumor domain family. Not much is known about the biological function of this enzyme, but it may deubiquitinate TRAF3 and -6. This would negatively regulate virus-triggered type I IFN induction.

Storage: Store at -80°C ; avoid multiple freeze-thaw cycles

Note: N/A

Literature:

1. Balakirev MY, *et al.* (2003) EMBO Rep 4(5), 517 – 522.
2. Reyes-Turcu FE, *et al.* (2009) Annu Rev Biochem 78, 363 – 397.
3. Li S, *et al.* (2010) J Biol Chem 285(7), 4291 – 4297.

