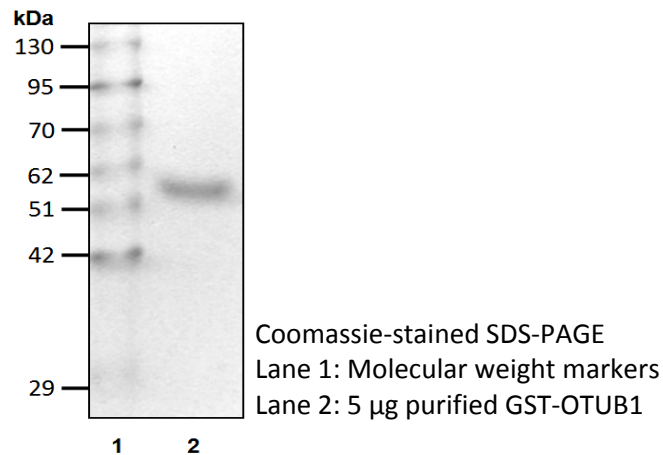


GST-OTUB1

Cat. # H3010,H3011

Also Known as: OTB1; OTU1; HSPC263
NCBI Reference: NM_017670
MW (no tag): 31.2 kDa
Species: Human
Source: Bacterial recombinant
Tag: GST
Stock Buffer: 20 mM Tris, 150 mM NaCl, 2 mM β ME, 10% Glycerol
Concentration: See tube label
Quality Assurance: ~95% by SDS-PAGE

Image



Description:

Deubiquitinating enzymes (DUBs) are proteases that possess the ability to cleave ubiquitin chains or the isopeptide bond that conjugates ubiquitin with a substrate. Human cells have approximately 100 DUBs that play important roles in regulating various cellular events. OTUB1 is a member of the ovarian tumor domain family. It is recognized as a K48 ubiquitin chain-specific DUB and can inhibit E2 enzymes, especially Ubc13 (also known as Ube2N), which is known to synthesize K63-linked ubiquitin chains. OTUB1 may also deubiquitinate TRAF3 and -6. This would negatively regulate virus-triggered type I IFN induction.

Storage:

Store at -80°C; avoid multiple freeze-thaw cycles

Note:

N/A

Literature:

1. Balakirev MY, *et al.* (2003) EMBO Rep 4(5), 517 – 522.
2. Wang T, *et al.* (2009) J Mol Biol 386(4), 1011 – 1023.
3. Reyes-Turcu FE, *et al.* (2009) Annu Rev Biochem 78, 363 – 397.
4. Li S, *et al.* (2010) J Biol Chem 285(7), 4291 – 4297.
5. Wiener R, *et al.* (2012) Nature 483(7391), 618 – 622.

