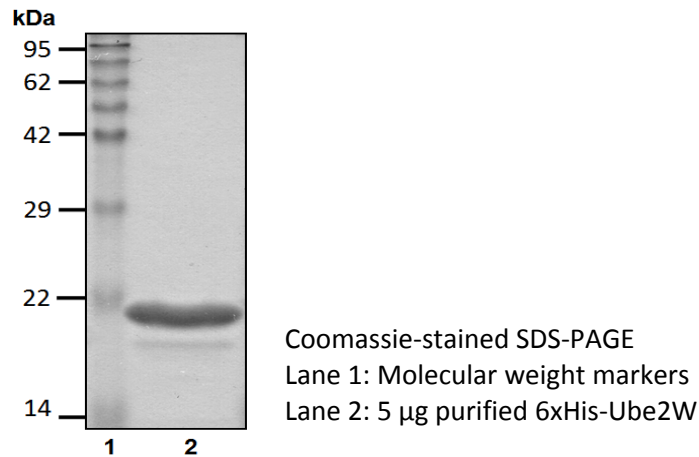


6xHis-Ube2W

Cat. # C4000, C4001

Also Known as: UBC16; UBC-16; hUBC-16; FLJ11011
NCBI Reference: NM_001001481
MW (no tag): 18.7 kDa
Species: Human
Source: Bacterial recombinant
Tag: 6xHis
Stock Buffer: 20 mM Tris, 150 mM NaCl, 2 mM β ME, 10% Glycerol
Concentration: See tube label
Quality Assurance: ~90% by SDS-PAGE

Image



Description: Ube2W is an E2 enzyme, which is part of the E1, E2, and E3 cascade responsible for ubiquitination of protein substrates. It has been shown to catalyze monoubiquitination of Fanconi anemia complementation group L (FANCL), an E3 Ub ligase. The FANCL is part of a complex that is able to monoubiquitinate FANCD2 during DNA repair. Ube2W can also interact with the RING domain of the breast and ovarian cancer susceptibility protein called BRCA1.

Storage: Store at -80°C; avoid multiple freeze-thaw cycles

Note: N/A

Literature:

1. Yin G, *et al.* (2006) *Front Biosci* 11, 1500 – 1507.
2. Christensen DE, *et al.* (2007) *Nat Struct Mol Biol* 14, 941 – 948.
3. Alpi AF, *et al.* (2008) *Mol Cell* 32, 767 – 777.
4. Zhang Y, *et al.* (2011) *Mol Cells* 31(2), 113 – 122.

