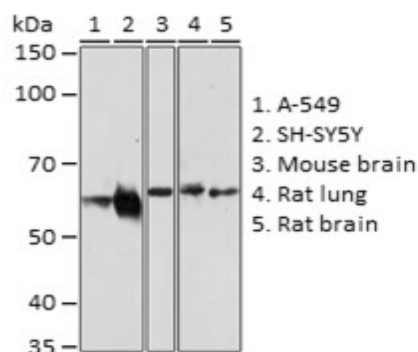
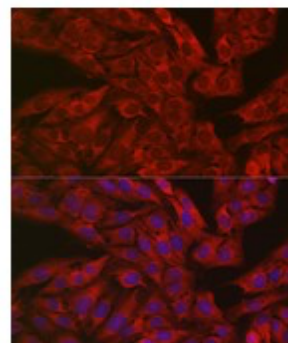


Product Name: GSDME Rabbit pAb
Catalog #: Z5832-20; Z5832-100
Also Known As: DFNA5; ICERE-1; GSDME
Quantity: 20 µl for Z5832-20; 100 µl for Z5832-100
Concentration: See labels on tube
Host Species: Rabbit
Isotype: IgG
Reactivity: Human, Mouse, Rat
Immunogen: Recombinant fusion protein containing a sequence corresponding to amino acids 1-260 of human GSDME.
Swiss Prot. #: O60443
Calculated MW: 54kDa
Detected MW: 54kDa
Applications: WB (1:500 - 1:2,000)
 IHC (1:50 - 1:100)
 IF (1:50 - 1:100)
 IP (not tested)
 Note: Antibody dilution should be optimized by users.

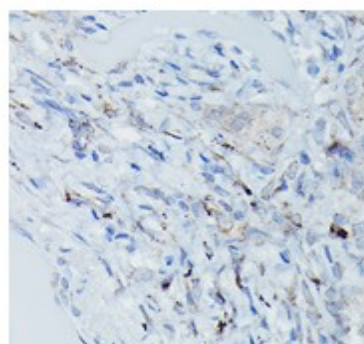
Images:



Immunoblotting 25 µg whole cell extracts of various cell lines using GSDME antibody (Z5832) at 1:1,000 dilution.



Immunofluorescence of U2OS cells using GSDME antibody (Z5832) at 1:100 dilution. Blue: DAPI nuclear staining.



Immunohistochemistry of paraffin-embedded Human pulmonary tuberculosis using GSDME antibody (Z5832) at 1:100 dilution.

Purification:	Protein A or G affinity purification
Buffer:	PBS with 0.02% sodium azide, 50% glycerol, pH7.3.
Storage:	Store at -20°C. Centrifuge to maximize product recovery.
Background:	GSDME is a member of the gasdermin-domain containing protein family. The gasdermin family that includes GSDMA, GSDMB, GSDMC, GSDMD, and GSDME have been shown to play a role in inflammation and cell death. It plays a role in the TP53-regulated cellular response to DNA damage probably by cooperating with TP53.
Reference:	<ol style="list-style-type: none">1. Van Laer L, et al. (1998) Nature Genet 20, 194-197.2. Op de Beeck, et al. (2011) Europ J Hum Genet 19, 965-973.