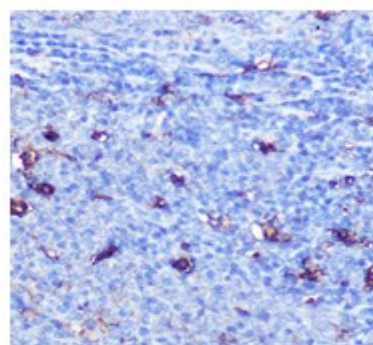
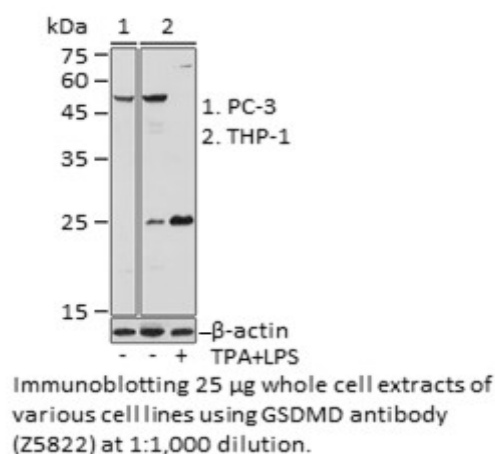
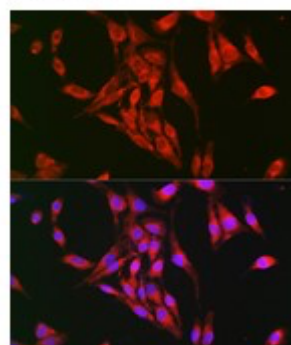
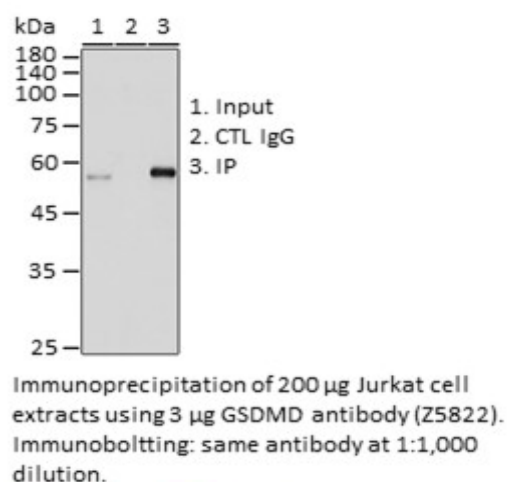


Product Name: GSDMD Rabbit pAb
Catalog #: Z5822-20; Z5822-100
Also Known As: DF5L; DFNA5L; FKSG10; GSDMDC1; GSDMD
Quantity: 20 µl for Z5822-20; 100 µl for Z5822-100
Concentration: See labels on tube
Host Species: Rabbit
Isotype: IgG
Reactivity: Human, Mouse, Rat
Immunogen: Recombinant protein of human GSDMD.
Swiss Prot. #: P57764
Calculated MW: 53kDa
Detected MW: 23KDa/53KDa
Applications: WB (1:500 - 1:2,000)
 IP (1:50 - 1:200)
 IHC (1:50 - 1:200)
 IF (1:50 - 1:200)
 Note: Antibody dilution should be optimized by users.

Images:



Immunohistochemistry of paraffin-embedded rat spleen using GSDMD antibody (Z5822) at 1:100 dilution.



Immunofluorescence of BALB-3T3 cells using GSDMD antibody (Z5822) at 1:100 dilution. Blue: DAPI nuclear staining.

Purification: Protein A or G affinity purification

- Buffer:** PBS with 0.02% sodium azide, 50% glycerol, pH7.3.
- Storage:** Store at -20°C. Centrifuge to maximize product recovery.
- Background:** GSDMD is a member of the gasdermin-domain containing protein family. The gasdermin family that includes GSDMA, GSDMB, GSMD C, GSDMD, and GSDME have been shown to play a role in inflammation and cell death. It has been reported to have a critical role as a downstream effector of pyroptosis. Pyroptosis is a lytic type of cell death triggered by inflammasomes, multiprotein complexes assembled in response to pathogen-associated molecular patterns (PAMPs) or danger-associated molecular patterns (DAMPs) that result in the activation of caspase-1 and subsequent cleavage of pro-inflammatory cytokines IL-1 β and IL-18.
- Reference:**
1. Katoh M and Katoh M, (2004) Int J Oncol 25, 765-770.
 2. Saeki N, et al. (2009) Genes Chromosomes Cancer 48, 261-271.