

Product Name: GSDMB Rabbit pAb

Catalog #: Z5812-20; Z5812-100

Also Known As: GSDMB; GSDML; PP4052; PRO2521

Quantity: 20 µl for Z5812-20; 100 µl for Z5812-100

Concentration: See labels on tube

Host Species: Rabbit

Isotype: IgG

Reactivity: Human, Mouse, Rat

Immunogen: Recombinant fusion protein containing a sequence corresponding to amino acids 1-270 of human GSDMB.

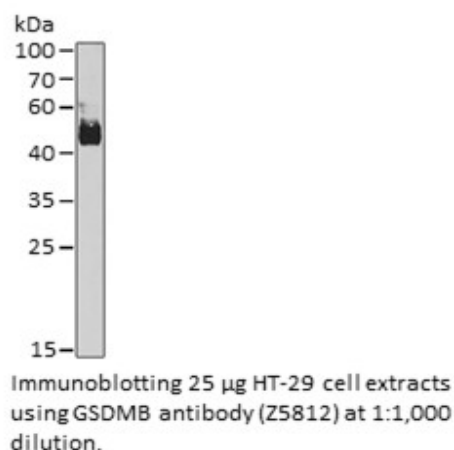
Swiss Prot. #: Q8TAX9

Calculated MW: 47kDa

Detected MW: 47kDa

Applications: WB (1:500 - 1:2,000)
IP (not tested)
IHC (not tested)
IF (not tested)
Note: Antibody dilution should be optimized by users.

Images:



Purification: Protein A or G affinity purification

Buffer: PBS with 0.02% sodium azide, 50% glycerol, pH7.3.

Storage: Store at -20°C. Centrifuge to maximize product recovery.

Background: GSDMB is a member of the gasdermin-domain containing protein family. The gasdermin family that includes GSDMA, GSDMB, GSMDL, GSDMD, and GSDME have been shown to play a role in inflammation and cell death. GSDMB has been reported to be upregulated in several tumor types, and in breast cancer has been associated with metastasis and poor prognosis. In addition GSDMB has been associated with immune disorders including asthma. GSDMB can also have a role in pyroptosis as it was found to activate caspase-4 and promote GSDMD cleavage.

Reference:

1. Katoh M and Katoh M, (2004) Int J Oncol 24, 757-763.
2. Tamura M, et al. (2007) Genomics 89, 618-629.