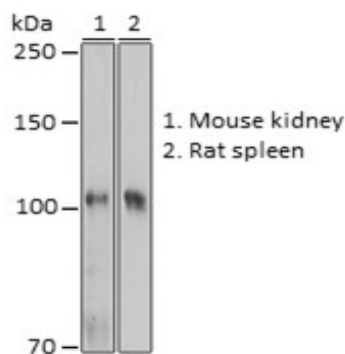
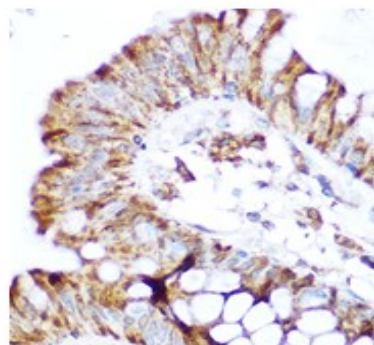


Product Name: NOD2 Rabbit pAb
Catalog #: Z5802-20; Z5802-100
Also Known As: NOD2; ACUG; BLAU; BLAUS; CARD15; CD; CLR16.3; IBD1; NLRC2; NOD2B; PSORAS1; YAOS
Quantity: 20 µl for Z5802-20; 100 µl for Z5802-100
Concentration: See labels on tube
Host Species: Rabbit
Isotype: IgG
Reactivity: Human, Mouse, Rat
Immunogen: Recombinant fusion protein containing a sequence corresponding to amino acids 611-910 of human NOD2.
Swiss Prot. #: Q9HC29
Calculated MW: 115kDa
Detected MW: 100KDa
Applications: WB (1:500 - 1:2,000)
 IHC (1:50 - 1:200)
 IP (not tested)
 IF (not tested)
 Note: Antibody dilution should be optimized by users.

Images:



Immunoblotting 25 µg whole cell extracts of various cell lines using NOD2 antibody (Z5802) at 1:1,000 dilution.



Immunohistochemistry of paraffin-embedded human colon using NOD2 antibody (Z5802) at 1:100 dilution.

Purification: Protein A or G affinity purification
Buffer: PBS with 0.02% sodium azide, 50% glycerol, pH7.3.
Storage: Store at -20°C. Centrifuge to maximize product recovery.
Background: NOD2 is a member of the Nod1/Apaf-1 family and encodes a protein with two caspase recruitment (CARD) domains and six leucine-rich repeats (LRRs). The protein is primarily expressed in the peripheral blood leukocytes. It plays a role in the immune response to intracellular bacterial lipopolysaccharides (LPS) by recognizing the muramyl dipeptide (MDP) derived from them and activating the NFκB protein.

Reference:
 1. Ogura Y, et al. (2001) J Biol Chem 276, 4812-4818.
 2. King K, et al. (2007) Genomics 90, 493-501.