

Product Name: IL-1 beta Rabbit pAb

Catalog #: Z5772-20; Z5772-100

Also Known As: IL-1; IL1-BETA; IL1F2; IL1 beta; IL1B

Quantity: 20 µl for Z5772-20; 100 µl for Z5772-100

Concentration: See labels on tube

Host Species: Rabbit

Isotype: IgG

Reactivity: Human, Mouse, Rat

Immunogen: Recombinant fusion protein containing a sequence corresponding to amino acids 1-269 of human IL1 beta.

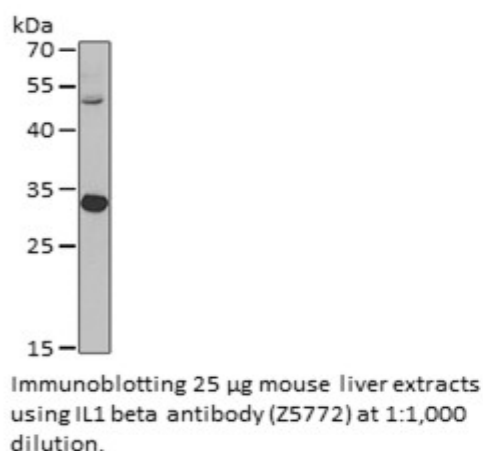
Swiss Prot. #: P01584

Calculated MW: 30kDa

Detected MW: 30kDa

Applications: WB (1:500 - 1:2,000)
IP (not tested)
IHC (not tested)
IF (not tested)
Note: Antibody dilution should be optimized by users.

Images:



Purification: Protein A or G affinity purification

Buffer: PBS with 0.02% sodium azide, 50% glycerol, pH7.3.

Storage: Store at -20°C. Centrifuge to maximize product recovery.

Background: IL-1 beta is one of the major caspase-1 targets, is a multifunctional cytokine that is involved in a host of immune and proinflammatory responses. It is produced primarily by activated monocytes and macrophages. It signals through various adaptor proteins and kinases that lead to activation of numerous downstream targets. Human IL-1 β is synthesized as a 31 kDa precursor. To gain activity, the precursor must be cleaved by caspase-1 between Asp116 and Ala117 to yield a 17 kDa mature form.

Reference:

1. Auron PE, et al. (1984) Proc Nat Acad Sci 81, 7907-7911.
2. Dinarello CA, (1998) Int Rev Immunol 16, 457-499.