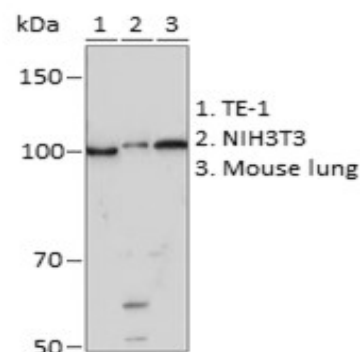
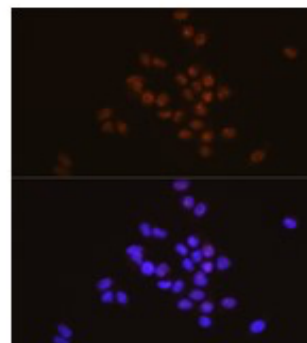


Product Name: STAT6 Rabbit mAb
Catalog #: Z5060-20; Z5060-100
Also Known As: D12S1644; IL-4-STAT; STAT6B; STAT6C; STAT6
Quantity: 20 µl for Z5060-20; 100 µl for Z5060-100
Concentration: See labels on tube
Host Species: Rabbit
Isotype: IgG
Reactivity: Human, Mouse
Immunogen: A synthesized peptide derived from human STAT6.
Swiss Prot. #: P42226
Calculated MW: 94kDa
Detected MW: 100kDa
Applications: WB (1:500 - 1:2,000)
 IF (1:50 - 1:200)
 IP (not tested)
 IHC (not tested)
 Note: Antibody dilution should be optimized by users.

Images:



Immunoblotting 25 µg whole cell extracts of various cell lines using STAT6 antibody (Z5060) at 1:1,000 dilution.



Immunofluorescence of HeLa cells using STAT6 antibody (Z5060) at 1:100 dilution. Blue: DAPI nuclear staining.

Purification: Protein A or G affinity purification
Buffer: PBS with 0.02% sodium azide, 0.05% BSA, 50% glycerol, pH7.3
Storage: Store at -20°C. Centrifuge to maximize product recovery.
Background: STAT6 is a member of the STAT family of transcription factors. In response to cytokines and growth factors, STAT family members are phosphorylated by the receptor associated kinases, and then form homo- or heterodimers that translocate to the nucleus where they act as transcription activators. This protein plays a central role in exerting IL4 mediated biological responses. It is found to induce the expression of BCL2L1/BCL-X(L), which is responsible for the anti-apoptotic activity of IL4. In addition, Stat6 is activated by IFNα in B cells, where it forms transcriptionally active complexes with Stat2 and p48.

Reference:
 1. Hou J, et al. (1994) Science 265, 1701-1706.
 2. Quelle FW, et al. (1995) Mol Cell Biol 15, 3336-3343.

