

Product Name: DMT1 Rabbit pAb

Catalog #: Z2912-20; Z2912-100

Also Known As: SLC11A2; AHMIO1; DCT1; DMT1; NRAMP2

Quantity: 20 µl for Z2912-20; 100 µl for Z2912-100

Concentration: See labels on tube

Host Species: Rabbit

Isotype: IgG

Reactivity: Human, Mouse, Rat

Immunogen: Recombinant fusion protein containing a sequence corresponding to amino acids 1-100 of human DMT1.

Swiss Prot. #: P49281

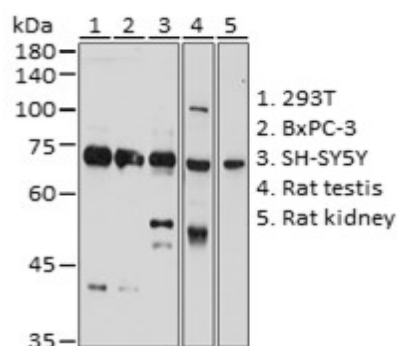
Calculated MW: 65kDa

Detected MW: 72KDa

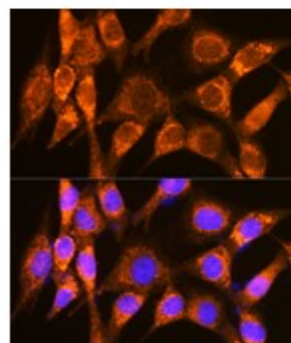
Applications: WB (1:500 - 1:2,000)
IHC (1:50 - 1:200)
IF (1:50 - 1:200)
IP (not tested)

Note: Antibody dilution should be optimized by users.

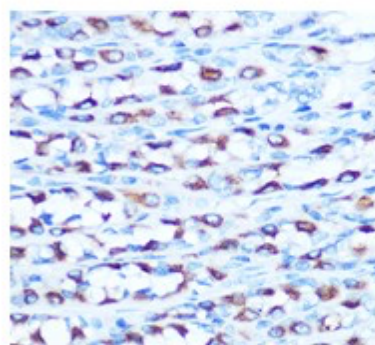
Images:



Immunoblotting 25 µg whole cell extracts of various cell lines using DMT1 antibody (Z2912) at 1:1,000 dilution.



Immunofluorescence of NIH3T3 cells using DMT1 antibody (Z2912) at 1:100 dilution. Blue: DAPI nuclear staining.



Immunohistochemistry of paraffin-embedded rat stomach using DMT1 antibody (Z2912) at 1:100 dilution.

Purification:	Protein A or G affinity purification
Buffer:	PBS with 0.02% sodium azide, 50% glycerol, pH7.3.
Storage:	Store at -20°C. Centrifuge to maximize product recovery.
Background:	DMT1 belongs to the NRAMP family. It is important in metal transport, in particular iron. Can also transport manganese, cobalt, cadmium, nickel, vanadium and lead. Involved in apical iron uptake into duodenal enterocytes; and iron transport from acidified endosomes into the cytoplasm of erythroid precursor cells. May play an important role in hepatic iron accumulation and tissue iron distribution. Isoform 1 is highly expressed in brain. Isoform 2 is highly expressed in spleen, thymus and pancreas. Isoform 3 and isoform 4 are abundantly expressed in duodenum and kidney.
Reference:	<ol style="list-style-type: none">1. Gruenheid S, et al. (1995) Genomics 25, 514-525.2. Hubert N, et al. (2002) Proc Nat Acad Sci 99, 12345-12350.