

Product Name: RIPK2 Rabbit pAb

Catalog #: Z1982-20; Z1982-100

Also Known As: RIPK2; CARD3; CARDIAK; CCK; GIG30; RICK; RIP2

Quantity: 20 µl for Z1982-20; 100 µl for Z1982-100

Concentration: See labels on tube

Host Species: Rabbit

Isotype: IgG

Reactivity: Human, Mouse, Rat

Immunogen: Recombinant fusion protein containing a sequence corresponding to amino acids 1-540 of human RIPK2 (NP_003812.1).

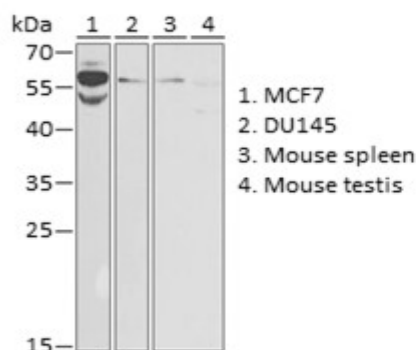
Swiss Prot. #: O43353

Calculated MW: 61 kDa

Detected MW: 61 kDa

Applications: WB (1:500 - 1:2,000)
IP (not tested)
IHC (not tested)
IF (not tested)
Note: Antibody dilution should be optimized by users.

Images:



Immunoblotting 25 µg whole cell extracts of various cell lines using RIPK2 antibody (Z1982) at 1:1,000 dilution.

Purification: Protein A or G affinity purification

Buffer: PBS with 0.02% sodium azide, 50% glycerol, pH7.3

Storage: Store at -20°C. Centrifuge to maximize product recovery.

Background: RIPK2 is a serine/threonine kinase with a carboxy-terminal caspase activation and recruitment domain (CARD). Association of RIPK2 with the tumor necrosis factor receptor (TNFR) causes activation of NF-κB and induction of apoptosis. Expression of RIPK2 is induced in macrophages upon exposure to bacterial cell wall components, such as LPS. RIPK2-deficient mouse models demonstrate that this kinase integrates and transduces signals for both the innate and adaptive immune system.

Reference: 1. McCarthy JV, et al. (1998) J Biol Chem 273, 16968 - 16975.
2. Chin AI, et al. (2002) Nature 416, 190 - 194.