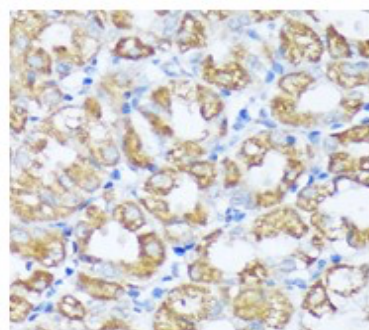
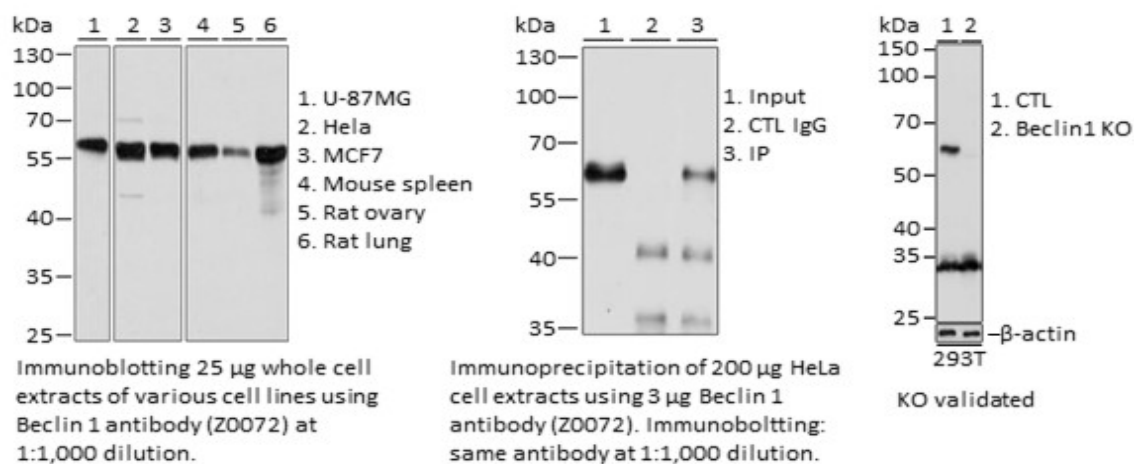
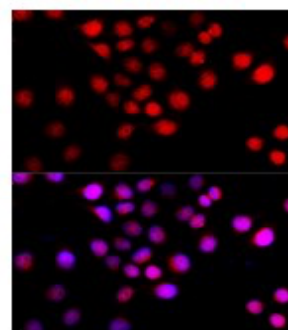


Product Name: Beclin 1 Rabbit pAb [KO Validated]
Catalog #: Z0072-20; Z0072-100
Also Known As: ATG6; VPS30; beclin1; Beclin 1; BECN1; beclin-1
Quantity: 20 µl for Z0072-20; 100 µl for Z0072-100
Concentration: See labels on tube
Host Species: Rabbit
Isotype: IgG
Reactivity: Human, Mouse, Rat
Immunogen: Recombinant fusion protein containing a sequence corresponding to amino acids 1-280 of human Beclin 1 (NP_003757.1).
Swiss Prot. #: Q14457
Calculated MW: 51 kDa
Detected MW: 60 kDa
Applications: WB (1:500 - 1:2,000)
 IP (1:50 - 1:100)
 IHC (1:50 - 1:200)
 IF (1:50 - 1:200)
 Note: Antibody dilution should be optimized by users.

Images:



Immunohistochemistry of paraffin-embedded human stomach using Beclin 1 antibody (Z0072) at 1:100 dilution.



Immunofluorescence of HeLa cells using Beclin 1 antibody (Z0072) at 1:100 dilution. Blue: DAPI nuclear staining.

Purification:	Protein A or G affinity purification
Buffer:	PBS with 0.02% sodium azide, 50% glycerol, pH7.3
Storage:	Store at -20°C. Centrifuge to maximize product recovery.
Background:	Beclin-1 is a protein that regulates autophagy, a catabolic process of degradation induced by starvation. It is a component of the phosphatidylinositol-3-kinase (PI3K) complex which mediates vesicle-trafficking processes. This protein is thought to play a role in multiple cellular processes, including tumorigenesis, neurodegeneration and apoptosis.
Reference:	1. Liang X, et al. (1999) Nature 402, 672 - 676. 2. Zhong Y, et al. (2009) Nature Cell Biol 11, 468 - 476.
Note:	This product is for research use only.