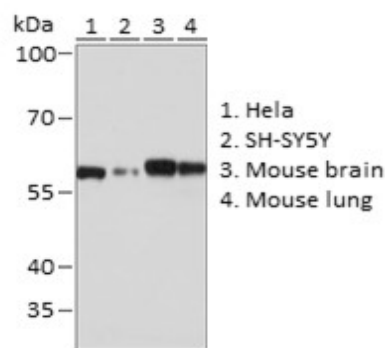
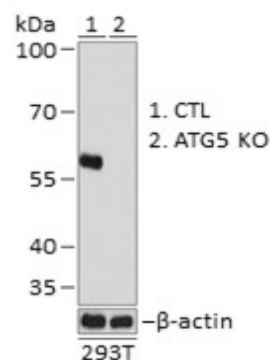


Product Name: ATG5 Rabbit mAb [KO Validated]
Catalog #: Z0050-20; Z0050-100
Also Known As: ATG5; APG5; APG5-LIKE; APG5L; ASP; hAPG5
Quantity: 20 µl for Z0050-20; 100 µl for Z0050-100
Concentration: See labels on tube
Host Species: Rabbit
Isotype: IgG
Reactivity: Human, Mouse, Rat
Immunogen: A synthesized peptide derived from human ATG5.
Swiss Prot. #: Q9H1Y0
Calculated MW: 33 kDa
Detected MW: 55 kDa
Applications: WB (1:500 - 1:2,000)
 IHC (1:50 - 1:200)
 IP (not tested)
 IF (not tested)
 Note: Antibody dilution should be optimized by users.

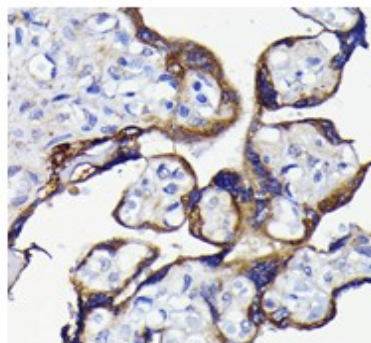
Images:



Immunoblotting 25 µg whole cell extracts of various cell lines using ATG5 antibody (Z0050) at 1:1,000 dilution.



Immunoblotting 25 µg whole cell extracts of normal (control) and ATG5 knockout (KO) 293T cells using ATG5 antibody (Z0050) at 1:1000 dilution.



Immunohistochemistry of paraffin-embedded human placenta using ATG5 antibody (Z0050) at 1:100 dilution.

Purification: Protein A or G affinity purification

- Buffer:** PBS with 0.02% sodium azide, 0.05% BSA, 50% glycerol, pH7.3
- Storage:** Store at -20°C. Centrifuge to maximize product recovery.
- Background:** ATG5 is a core protein involved in autophagy, a cellular process by which proteins and organelles are degraded and recycled. ATG5 plays a role in the elongation of the phagophore and its maturation into the complete autophagosome. ATG5 covalently binds to ATG12, and this conjugate noncovalently binds ATG16L1 to form a complex.
- Reference:**
1. Mai S, et al. (2012) Autophagy 8, 47 - 62.
 2. Kim M, et al. (2016) eLife 5, e12245.
- Note:** This product is for research use only.