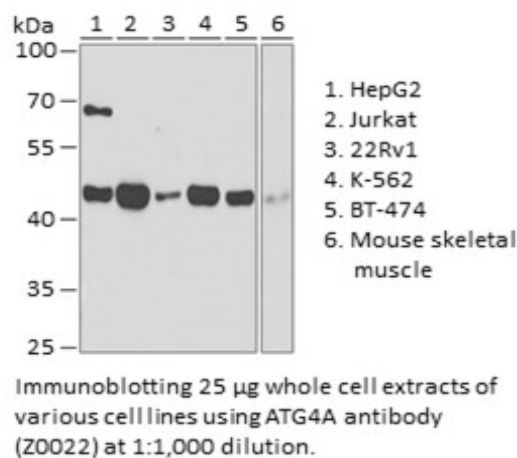


**Product Name:** ATG4A Rabbit pAb  
**Catalog #:** Z0022-20; Z0022-100  
**Also Known As:** ATG4A; APG4A; AUTL2  
**Quantity:** 20 µl for Z0022-20; 100 µl for Z0022-100  
**Concentration:** See labels on tube  
**Host Species:** Rabbit  
**Isotype:** IgG  
**Reactivity:** Human, Mouse  
**Immunogen:** Recombinant fusion protein containing a sequence corresponding to amino acids 289-398 of human ATG4A (NP\_443168.2).  
**Swiss Prot. #:** Q8WYN0  
**Calculated MW:** 45 kDa  
**Detected MW:** 45 kDa  
**Applications:** WB (1:500 - 1:2,000)  
 IP (not tested)  
 IHC (not tested)  
 IF (not tested)  
 Note: Antibody dilution should be optimized by users.

**Images:**



**Purification:** Protein A or G affinity purification  
**Buffer:** PBS with 0.02% sodium azide, 50% glycerol, pH7.3  
**Storage:** Store at -20°C. Centrifuge to maximize product recovery.  
**Background:** ATG4A is a cysteine protease required for the cytoplasm to vacuole transport (Cvt) and autophagy. Cleaves the C-terminal amino acid of ATG8 family proteins to reveal a C-terminal glycine. Exposure of the glycine at the C-terminus is essential for ATG8 proteins conjugation to phosphatidylethanolamine (PE) and insertion to membranes, which is necessary for autophagy.  
**Reference:** 1. Kabeya Y, et al. (2004) J Cell Sci 117, 2805 - 2812.  
 2. Scherz - Shouval R, et al. (2003) J Biol Chem 278, 14053 - 14058  
**Note:** This product is for research use only.