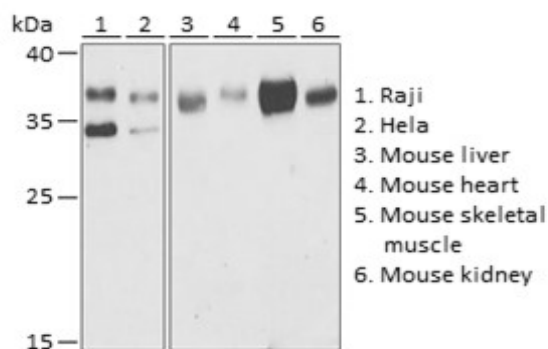
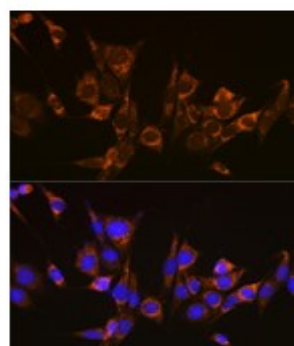


Product Name: ATG3 Rabbit pAb
Catalog #: Z0012-20; Z0012-100
Also Known As: ATG3; APG3; APG3-LIKE; APG3L; PC3-96
Quantity: 20 µl for Z0012-20; 100 µl for Z0012-100
Concentration: See labels on tube
Host Species: Rabbit
Isotype: IgG
Reactivity: Human, Mouse, Rat
Immunogen: Recombinant fusion protein containing a sequence corresponding to amino acids 1-314 of human ATG3 (NP_071933.2).
Swiss Prot. #: Q9NT62
Calculated MW: 40 kDa
Detected MW: 35 kDa
Applications: WB (1:500 - 1:2,000)
 IHC (1:50 - 1:200)
 IF (1:50 - 1:200)
 IP (not tested)
 Note: Antibody dilution should be optimized by users.

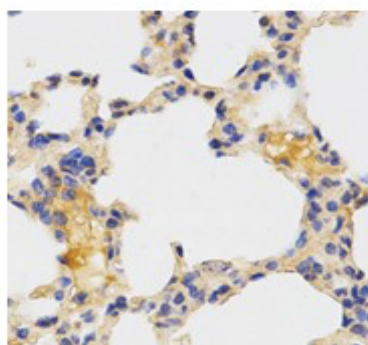
Images:



Immunoblotting 25 µg whole cell extracts of various cell lines using ATG3 antibody (Z0012) at 1:1,000 dilution.



Immunofluorescence of NIH3T3 cells using ATG3 antibody (Z0012) at 1:100 dilution. Blue: DAPI nuclear staining.



Immunohistochemistry of paraffin-embedded mouse lung using ATG3 antibody (Z0012) at 1:100 dilution.

Purification:	Protein A or G affinity purification
Buffer:	PBS with 0.02% sodium azide, 50% glycerol, pH7.3
Storage:	Store at -20°C. Centrifuge to maximize product recovery.
Background:	ATG3 is a ubiquitin-like-conjugating enzyme and is a component of ubiquitination-like systems involved in autophagy, the process of degradation and recycling of cytoplasmic constituents in eukaryotic cells.
Reference:	1. Tanida I, et al. (2002) J Biol Chem 277, 13739 - 13744. 2. Radoshevich L, et al. (2010) Cell 142, 590 - 600.
Note:	This product is for research use only.