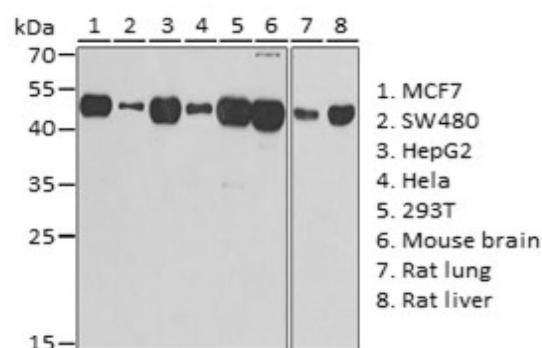
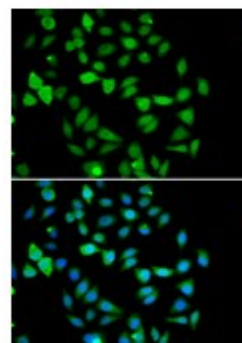


**Product Name:** STAMBP Rabbit pAb  
**Catalog #:** Y9272-20; Y9272-100  
**Also Known As:** STAMBP; AMSH; MICCAP  
**Quantity:** 20 µl for Y9272-20; 100 µl for Y9272-100  
**Concentration:** See labels on tube  
**Host Species:** Rabbit  
**Isotype:** IgG  
**Reactivity:** Human, Mouse, Rat  
**Immunogen:** Recombinant fusion protein containing a sequence corresponding to amino acids 100-270 of human STAMBP (NP\_998787.1).  
**Swiss Prot. #:** O95630  
**Calculated MW:** 48 kDa  
**Detected MW:** 48 kDa  
**Applications:** WB (1:500 - 1:2,000)  
 IHC (1:50 - 1:200)  
 IF (1:50 - 1:100)  
 IP (not tested)  
 Note: Antibody dilution should be optimized by users.

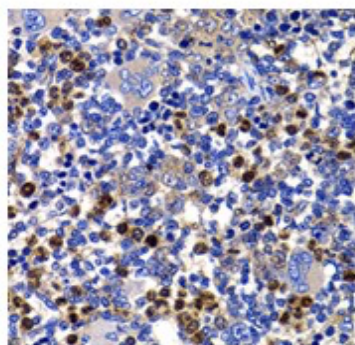
**Images:**



Immunoblotting 25 µg whole cell extracts of various cell lines using STAMBP antibody (Y9272) at 1:1,000 dilution.



Immunofluorescence of U2OS cells using STAMBP antibody (Y9272) at 1:100 dilution. Blue: DAPI nuclear staining.



Immunohistochemistry of paraffin-embedded rat spleen using STAMBP antibody (Y9272) at 1:100 dilution.

<b>Purification:</b>	Protein A or G affinity purification
<b>Buffer:</b>	PBS with 0.02% sodium azide, 50% glycerol, pH7.3
<b>Storage:</b>	Store at -20°C. Centrifuge to maximize product recovery.
<b>Background:</b>	STAMBP is a member of the JAMM subfamily of DUBs. DUBs are categorized into 5 subfamilies: USP, UCH, OTU, MJD, and JAMM. STAMBP is an endosomal DUB that preferentially displays ubiquitin isopeptidase activity toward K63-linked chains, which is critically dependent upon its interaction with STAM.
<b>Reference:</b>	1. Tanaka N, et al. (1999) J Biol Chem 274, 19129 - 19135. 2. McCullough J, et al. (2006) Curr Biol 16, 160 - 165.
<b>Note:</b>	This product is for research use only.