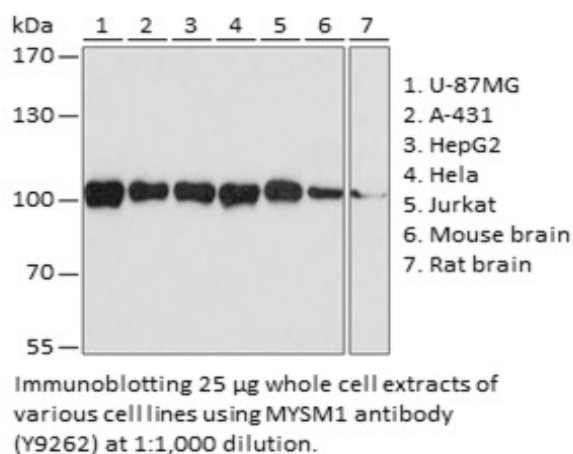


**Product Name:** MYSM1 Rabbit pAb  
**Catalog #:** Y9262-20; Y9262-100  
**Also Known As:** MYSM1; 2A-DUB; 2ADUB  
**Quantity:** 20 µl for Y9262-20; 100 µl for Y9262-100  
**Concentration:** See labels on tube  
**Host Species:** Rabbit  
**Isotype:** IgG  
**Reactivity:** Human, Mouse, Rat  
**Immunogen:** A synthetic peptide corresponding to a sequence within amino acids 700 to the C-terminus of human MYSM1 (NP\_001078956.1).  
**Swiss Prot. #:** Q5VVJ2  
**Calculated MW:** 95 kDa  
**Detected MW:** 105 kDa  
**Applications:** WB (1:500 - 1:2,000)  
 IP (not tested)  
 IHC (not tested)  
 IF (not tested)  
 Note: Antibody dilution should be optimized by users.

**Images:**



**Purification:** Protein A or G affinity purification  
**Buffer:** PBS with 0.02% sodium azide, 50% glycerol, pH7.3  
**Storage:** Store at -20°C. Centrifuge to maximize product recovery.  
**Background:** MYSM1 is metalloprotease that specifically deubiquitinates monoubiquitinated histone H2A, a mark for epigenetic transcriptional repression and chromatin inaccessibility. In addition to its role in nucleus, MYSM1 is a key negative regulator of innate immunity that accumulates in cytoplasm to inhibit proximal pattern recognition receptor (PRR) signaling upon microbial stimuli.  
**Reference:** 1. Nagase T, et al. (2001) DNA Res 8, 179 - 187.  
 2. Panda S, et al. (2015) Immunity 43, 647 - 659.  
**Note:** This product is for research use only.