

Product Name: DESI2 Rabbit pAb

Catalog #: Y9252-20; Y9252-100

Also Known As: DESI2; C1orf121; CGI-146; DESI; DESI1; DeSI-2; FAM152A; PNAS-4; PPPDE1

Quantity: 20 µl for Y9252-20; 100 µl for Y9252-100

Concentration: See labels on tube

Host Species: Rabbit

Isotype: IgG

Reactivity: Human

Immunogen: Recombinant fusion protein containing a sequence corresponding to amino acids 1-194 of human DESI2 (NP_057160.2).

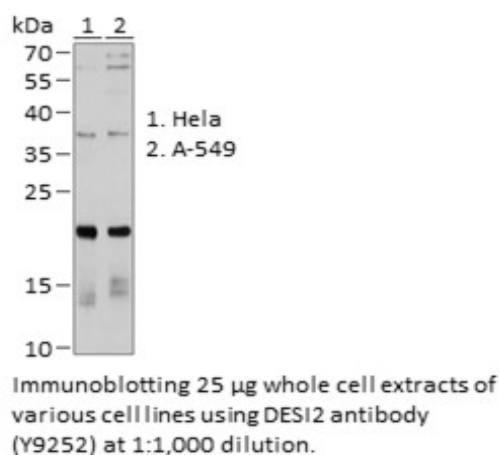
Swiss Prot. #: Q9BSY9

Calculated MW: 21 kDa

Detected MW: 21 kDa

Applications: WB (1:500 - 1:2,000)
IP (not tested)
IHC (not tested)
IF (not tested)
Note: Antibody dilution should be optimized by users.

Images:



Purification: Protein A or G affinity purification

Buffer: PBS with 0.02% sodium azide, 50% glycerol, pH7.3

Storage: Store at -20°C. Centrifuge to maximize product recovery.

Background: DESI2 has deubiquitinating activity towards 'Lys-48'- and 'Lys-63'-linked polyubiquitin chains. Deubiquitinates 'Lys-48'-linked polyubiquitination of RPS7 leading to its stabilization.

Reference: 1. Shin EJ, et al. (2012) EMBO Rep 13, 339 - 346.
2. Xie X, et al. (2017) Biochem Biophys Res Commun 488, 291 - 296.

Note: This product is for research use only.