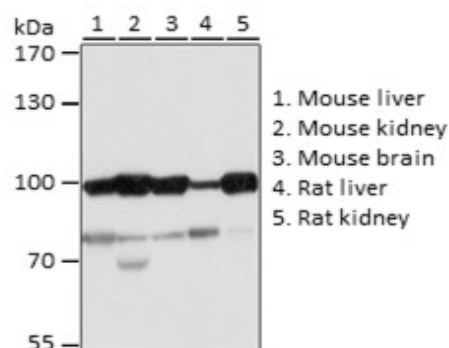
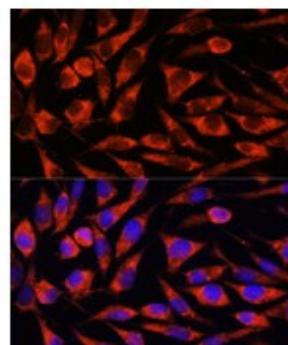


Product Name: OTUD7B Rabbit pAb
Catalog #: Y9132-20; Y9132-100
Also Known As: OTUD7B; CEZANNE; ZA20D1
Quantity: 20 µl for Y9132-20; 100 µl for Y9132-100
Concentration: See labels on tube
Host Species: Rabbit
Isotype: IgG
Reactivity: Human, Mouse, Rat
Immunogen: Recombinant fusion protein containing a sequence corresponding to amino acids 530-700 of human OTUD7B (NP_064590.2).
Swiss Prot. #: Q6GQQ9
Calculated MW: 92 kDa
Detected MW: 95 kDa
Applications: WB (1:500 - 1:2,000)
 IHC (1:50 - 1:200)
 IF (1:50 - 1:200)
 IP (not tested)
 Note: Antibody dilution should be optimized by users.

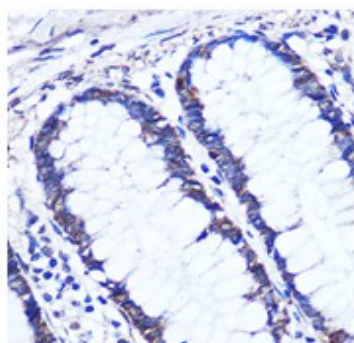
Images:



Immunoblotting 25 µg whole cell extracts of various cell lines using OTUD7B antibody (Y9132) at 1:1,000 dilution.



Immunofluorescence of L929 cells using OTUD7B antibody (Y9132) at 1:100 dilution. Blue: DAPI nuclear staining.



Immunohistochemistry of paraffin-embedded Human colon using OTUD7B antibody (Y9132) at 1:100 dilution.

Purification:	Protein A or G affinity purification
Buffer:	PBS with 0.02% sodium azide, 50% glycerol, pH7.3
Storage:	Store at -20°C. Centrifuge to maximize product recovery.
Background:	OTUD7B is a member of the OTU subfamily of DUBs. DUBs are categorized into 5 subfamilies: USP, UCH, OTU, MJD, and JAMM. OTUD7B prefers cleavage of lysine 11-linked polyubiquitin chains.
Reference:	<ol style="list-style-type: none">1. Evans PC, et al. (2001) Biochem J 357, 617 - 623.2. Enesa K, et al. (2008) J Biol Chem 283, 7036 - 7045.
Note:	This product is for research use only.