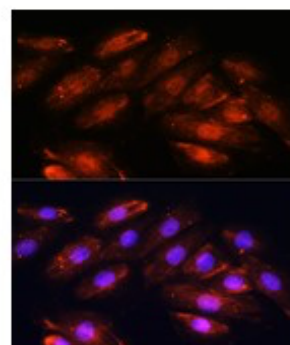
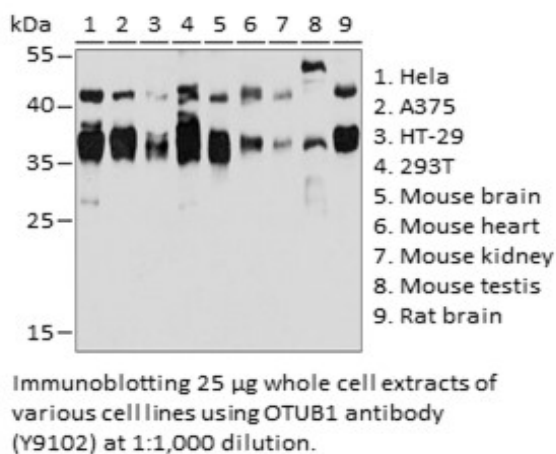


Product Name: OTUB1 Rabbit pAb
Catalog #: Y9102-20; Y9102-100
Also Known As: OTUB1; HSPC263; OTB1; OTU1
Quantity: 20 µl for Y9102-20; 100 µl for Y9102-100
Concentration: See labels on tube
Host Species: Rabbit
Isotype: IgG
Reactivity: Human, Mouse, Rat
Immunogen: Recombinant fusion protein containing a sequence corresponding to amino acids 1-220 of human OTUB1 (NP_060140.2).
Swiss Prot. #: Q96FW1
Calculated MW: 35 kDa
Detected MW: 35 kDa
Applications: WB (1:500 - 1:2,000)
 IF (1:50 - 1:200)
 IP (not tested)
 IHC (not tested)
 Note: Antibody dilution should be optimized by users.

Images:



Immunofluorescence of H9C2 cells using OTUB1 antibody (Y9102) at 1:100 dilution. Blue: DAPI nuclear staining.

Purification: Protein A or G affinity purification
Buffer: PBS with 0.02% sodium azide, 50% glycerol, pH7.3
Storage: Store at -20°C. Centrifuge to maximize product recovery.
Background: OTUB1 is a member of the OTU (ovarian tumor) superfamily of DUBs. DUBs are categorized into 5 subfamilies: USP, UCH, OTU, MJD, and JAMM. It is a highly specific ubiquitin iso-peptidase, and cleaves ubiquitin from branched poly-ubiquitin chains but not from ubiquitinated substrates.
Reference: 1. Balakirev MY, et al. (2003) EMBO Rep 4, 517 - 522.
 2. Nakada S, et al. (2010) Nature 466, 941 - 946.
Note: This product is for research use only.