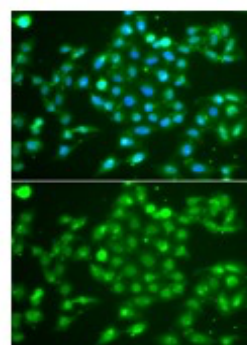
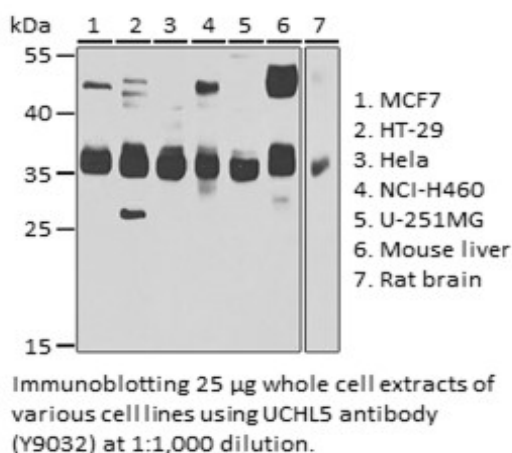


**Product Name:** UCHL5 Rabbit pAb  
**Catalog #:** Y9032-20; Y9032-100  
**Also Known As:** UCHL5; CGI-70; INO80R; UCH-L5; UCH37  
**Quantity:** 20 µl for Y9032-20; 100 µl for Y9032-100  
**Concentration:** See labels on tube  
**Host Species:** Rabbit  
**Isotype:** IgG  
**Reactivity:** Human, Mouse, Rat  
**Immunogen:** Recombinant fusion protein containing a sequence corresponding to amino acids 1-328 of human UCHL5 (NP\_001186190.1).  
**Swiss Prot. #:** Q9Y5K5  
**Calculated MW:** 37 kDa  
**Detected MW:** 37 kDa  
**Applications:** WB (1:500 - 1:2,000)  
 IF (1:50 - 1:100)  
 IP (not tested)  
 IHC (not tested)  
 Note: Antibody dilution should be optimized by users.

**Images:**



Immunofluorescence of A549 cells using UCHL5 antibody (Y9032) at 1:100 dilution. Blue: DAPI nuclear staining.

**Purification:** Protein A or G affinity purification  
**Buffer:** PBS with 0.02% sodium azide, 50% glycerol, pH7.3  
**Storage:** Store at -20°C. Centrifuge to maximize product recovery.  
**Background:** UCHL5 is a UCH family member of DUBs. DUBs are categorized into 5 subfamilies: USP, UCH, OTU, MJD, and JAMM. UCHL5 is one the DUBs on the 26S proteasome that recycles ubiquitin in proteasome-mediated degradation.  
**Reference:** 1. Wicks SJ, et al. (2005) Oncogene 24, 8080 - 8084.  
 2. Yao T, et al. (2006) Nat Cell Biol 8, 994 - 1002.  
**Note:** This product is for research use only.