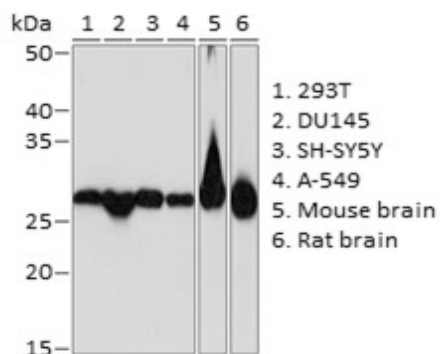
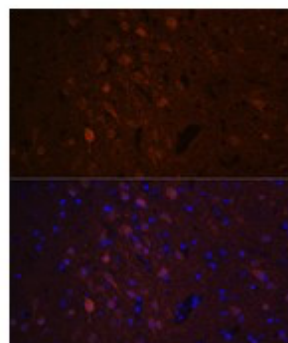


**Product Name:** UCHL1 Rabbit mAb  
**Catalog #:** Y9000-20; Y9000-100  
**Also Known As:** UCHL1; HEL-117; HEL-S-53; NDGOA; PARK5; PGP 9.5; PGP9.5; PGP95; SPG79; Uch-L1  
**Quantity:** 20 µl for Y9000-20; 100 µl for Y9000-100  
**Concentration:** See labels on tube  
**Host Species:** Rabbit  
**Isotype:** IgG  
**Reactivity:** Human, Mouse, Rat  
**Immunogen:** A synthesized peptide derived from human UCHL1.  
**Swiss Prot. #:** P09936  
**Calculated MW:** 25 kDa  
**Detected MW:** 25 kDa  
**Applications:** WB (1:500 - 1:2,000)  
 IHC (1:50 - 1:200)  
 IF (1:50 - 1:200)  
 IP (not tested)  
 Note: Antibody dilution should be optimized by users.

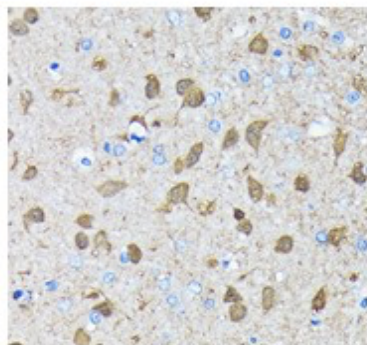
**Images:**



Immunoblotting 25 µg whole cell extracts of various cell lines using UCHL1 antibody (Y9000) at 1:1,000 dilution.



Immunofluorescence of mouse brain using UCHL1 antibody (Y9000) at 1:100 dilution. Blue: DAPI nuclear staining.



Immunohistochemistry of paraffin-embedded rat brain using UCHL1 antibody (Y9000) at 1:100 dilution.

**Purification:** Protein A or G affinity purification

- Buffer:** PBS with 0.02% sodium azide, 0.05% BSA, 50% glycerol, pH7.3
- Storage:** Store at -20°C. Centrifuge to maximize product recovery.
- Background:** UCHL1 is a UCH family member of deubiquitinating enzymes (DUBs). DUBs are categorized into 5 subfamilies: USP, UCH, OTU, MJD, and JAMM. Expression of UCHL1 is highly specific to neurons and to cells of the diffuse neuroendocrine system and their tumors. It is present in all neurons, expressed specifically in neurons and testis/ovary.
- Reference:**
1. Day INM, et al. (1987) FEBS Lett 210, 157 - 160.
  2. Nijman SM, et al. (2005) Cell 123, 773 - 786.
- Note:** This product is for research use only.