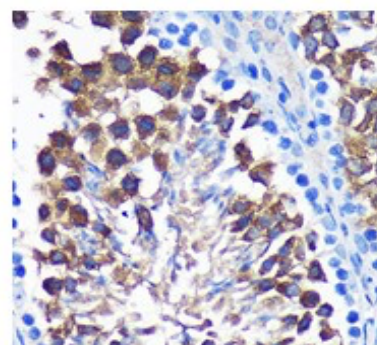
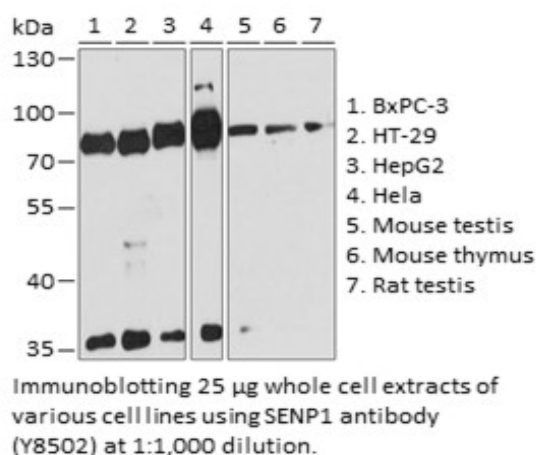


Product Name: SENP1 Rabbit pAb
Catalog #: Y8502-20; Y8502-100
Also Known As: SENP1; SuPr-2
Quantity: 20 µl for Y8502-20; 100 µl for Y8502-100
Concentration: See labels on tube
Host Species: Rabbit
Isotype: IgG
Reactivity: Human, Mouse, Rat
Immunogen: Recombinant fusion protein containing a sequence corresponding to amino acids 220-420 of human SENP1 (NP_001254523.1).
Swiss Prot. #: Q9P0U3
Calculated MW: 73 kDa
Detected MW: 73 kDa
Applications: WB (1:500 - 1:2,000)
 IHC (1:50 - 1:200)
 IP (not tested)
 IF (not tested)
 Note: Antibody dilution should be optimized by users.

Images:



Immunohistochemistry of paraffin-embedded Mouse testis using SENP1 antibody (Y8502) at 1:100 dilution.

Purification: Protein A or G affinity purification
Buffer: PBS with 0.02% sodium azide, 50% glycerol, pH7.3
Storage: Store at -20°C. Centrifuge to maximize product recovery.
Background: SENP1 is a member of the sentrin/SUMO-specific protease (SEN) family. SENP1 localizes to the nucleoplasm and catalyzes the release of SUMO1, SUMO2, and SUMO3 monomers from sumoylated substrates. SENP1 has been reported to be responsible for intracellular SUMO homeostasis in the control of normal cellular function. The removal of sumoylation by SENP1 from many important target proteins, such as HDAC1, HIF-1α, Stat5, p300, Elk-1, and SirT1, leads to the regulation of the related biological pathways.
Reference: 1. Gong L, et al. (2000) J Biol Chem 275, 3355 - 3359.
 2. Cheng J, et al. (2007) Cell 131, 584 - 595.
Note: This product is for research use only.