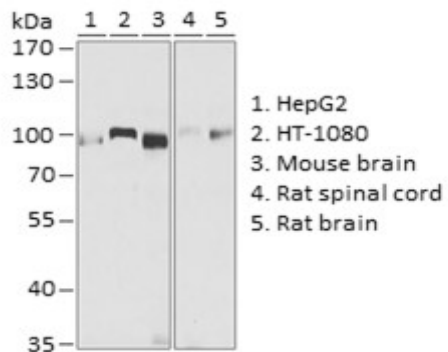


Product Name: LRSAM1 Rabbit pAb
Catalog #: Y6422-20; Y6422-100
Also Known As: LRSAM1; CMT2P; RIFLE; TAL
Quantity: 20 µl for Y6422-20; 100 µl for Y6422-100
Concentration: See labels on tube
Host Species: Rabbit
Isotype: IgG
Reactivity: Human, Mouse, Rat
Immunogen: Recombinant fusion protein containing a sequence corresponding to amino acids 1-290 of human LRSAM1 (NP_612370.3).
Swiss Prot. #: Q6UWE0
Calculated MW: 83 kDa
Detected MW: 83 kDa
Applications: WB (1:500 - 1:2,000)
IP (not tested)
IHC (not tested)
IF (not tested)
Note: Antibody dilution should be optimized by users.

Images:



Immunoblotting 25 µg whole cell extracts of various cell lines using LRSAM1 antibody (Y6422) at 1:1,000 dilution.

Purification: Protein A or G affinity purification
Buffer: PBS with 0.02% sodium azide, 50% glycerol, pH7.3
Storage: Store at -20°C. Centrifuge to maximize product recovery.
Background: LRSAM1 is a multi-domain-containing E3 ubiquitin-ligase involved in the regulation of cell adhesion. The LRSAM1 protein contains amino-terminal leucine-rich repeats (LRR), an ezrin-radixin-moesin (ERM) domain, a coiled-coil region, a sterile alpha motif (SAM) domain, and a carboxy-terminal RING finger domain. Research studies demonstrate that LRSAM1 participates in the endosomal sorting of proteins by regulating the ubiquitination of Tsg101, a component of the ESCRT-I endosomal sorting complex.
Reference: 1. Li B, et al. (2003) J Cell Biochem 90, 1224 - 1241.
2. Amit I, et al. (2004) Genes Dev 18, 1737 - 1752.
Note: This product is for research use only.

