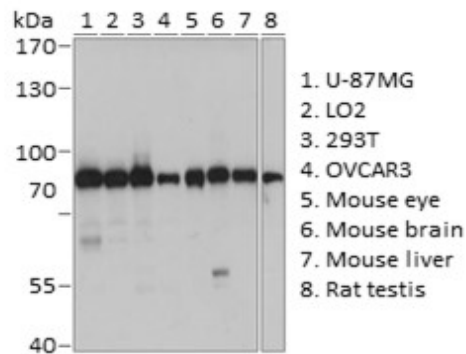


Product Name: G2E3 Rabbit pAb
Catalog #: Y6402-20; Y6402-100
Also Known As: G2E3; KIAA1333; PHF7B
Quantity: 20 µl for Y6402-20; 100 µl for Y6402-100
Concentration: See labels on tube
Host Species: Rabbit
Isotype: IgG
Reactivity: Human, Mouse, Rat
Immunogen: Recombinant fusion protein containing a sequence corresponding to amino acids 1-180 of human G2E3 (NP_060239.2).
Swiss Prot. #: Q7L622
Calculated MW: 80 kDa
Detected MW: 80 kDa
Applications: WB (1:500 - 1:2,000)
 IP (not tested)
 IHC (not tested)
 IF (not tested)
 Note: Antibody dilution should be optimized by users.

Images:



Immunoblotting 25 µg whole cell extracts of various cell lines using G2E3 antibody (Y6402) at 1:1,000 dilution.

Purification: Protein A or G affinity purification
Buffer: PBS with 0.02% sodium azide, 50% glycerol, pH7.3
Storage: Store at -20°C. Centrifuge to maximize product recovery.
Background: G2E3 contains both HECT and RING domains that could mediate protein ubiquitination. It plays an essential role in early embryonic development to prevent apoptotic death.
Reference:
 1. Nagase T, et al. (2000) DNA Res 7, 65 - 73.
 2. Brooks WS, et al. (2008) J Biol Chem 283, 22304 - 22315.
Note: This product is for research use only.