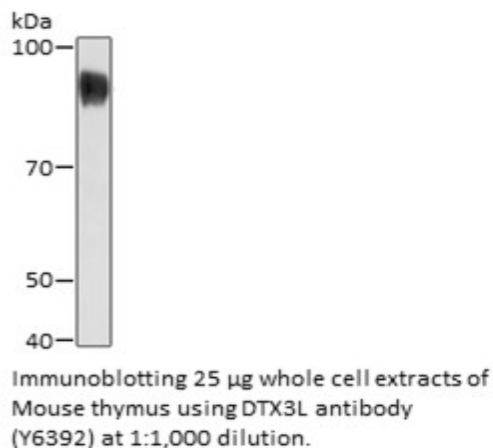


**Product Name:** DTX3L Rabbit pAb  
**Catalog #:** Y6392-20; Y6392-100  
**Also Known As:** DTX3L; BBAP  
**Quantity:** 20 µl for Y6392-20; 100 µl for Y6392-100  
**Concentration:** See labels on tube  
**Host Species:** Rabbit  
**Isotype:** IgG  
**Reactivity:** Human, Mouse, Rat  
**Immunogen:** Recombinant protein of human DTX3L.  
**Swiss Prot. #:** Q8TDB6  
**Calculated MW:** 83 kDa  
**Detected MW:** 83 kDa  
**Applications:** WB (1:500 - 1:2,000)  
 IP (not tested)  
 IHC (not tested)  
 IF (not tested)  
 Note: Antibody dilution should be optimized by users.

**Images:**



**Purification:** Protein A or G affinity purification  
**Buffer:** PBS with 0.02% sodium azide, 50% glycerol, pH7.3  
**Storage:** Store at -20°C. Centrifuge to maximize product recovery.  
**Background:** DTX3L is a member of deltex (DTX) family. Functions as an E3 ubiquitin-protein ligase that binds B aggressive lymphoma 1 (BAL1) to mediate the monoubiquitination of histone H4 Lys91 in response to DNA damage.  
**Reference:** 1. Takeyama K, et al. (2003) J Biol Chem 278, 21930 - 21937.  
 2. Yan Q, et al. (2009) Mol Cell 36, 110 - 120.  
**Note:** This product is for research use only.