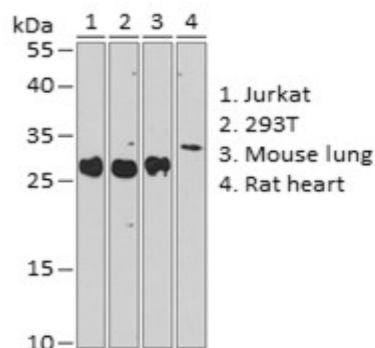
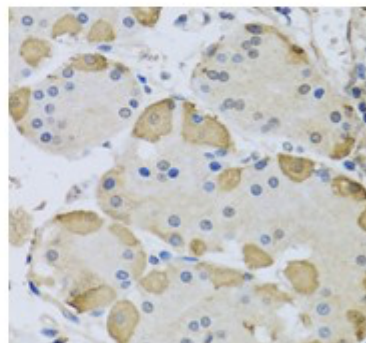


**Product Name:** ANAPC10 Rabbit pAb  
**Catalog #:** Y6382-20; Y6382-100  
**Also Known As:** ANAPC10; APC10; DOC1  
**Quantity:** 20 µl for Y6382-20; 100 µl for Y6382-100  
**Concentration:** See labels on tube  
**Host Species:** Rabbit  
**Isotype:** IgG  
**Reactivity:** Human, Mouse, Rat  
**Immunogen:** Recombinant fusion protein containing a sequence corresponding to amino acids 1-185 of human ANAPC10 (NP\_055700.2).  
**Swiss Prot. #:** Q9UM13  
**Calculated MW:** 21 kDa  
**Detected MW:** 26 kDa  
**Applications:** WB (1:500 - 1:2,000)  
 IHC (1:50 - 1:100)  
 IP (not tested)  
 IF (not tested)  
 Note: Antibody dilution should be optimized by users.

**Images:**



Immunoblotting 25 µg whole cell extracts of various cell lines using ANAPC10 antibody (Y6382) at 1:1,000 dilution.



Immunohistochemistry of paraffin-embedded human stomach using ANAPC10 antibody (Y6382) at 1:100 dilution.

**Purification:** Protein A or G affinity purification  
**Buffer:** PBS with 0.02% sodium azide, 50% glycerol, pH7.3  
**Storage:** Store at -20°C. Centrifuge to maximize product recovery.  
**Background:** ANAPC10 is a core subunit of the anaphase-promoting complex (APC), or cyclosome, a ubiquitin protein ligase that is essential for progression through the cell cycle. APC initiates sister chromatid separation by ubiquitinating the anaphase inhibitor securin and triggers exit from mitosis by ubiquitinating cyclin B, the activating subunit of cyclin-dependent kinase-1.  
**Reference:**  
 1. Grossberger R, et al. (1999) J Biol Chem 274, 14500 - 14507.  
 2. Wendt KS, et al. (2001) Nature Struct Biol 8, 784 - 788.  
**Note:** This product is for research use only.