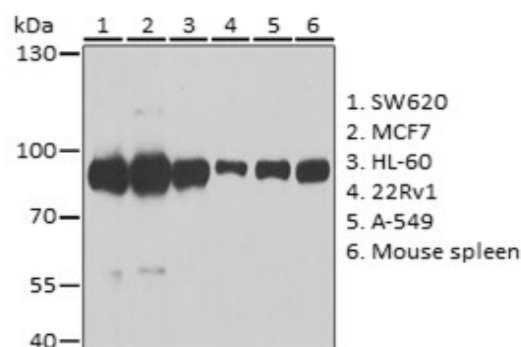
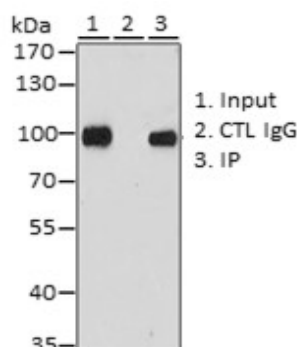


**Product Name:** ANAPC5 Rabbit pAb  
**Catalog #:** Y6372-20; Y6372-100  
**Also Known As:** ANAPC5; APC5  
**Quantity:** 20 µl for Y6372-20; 100 µl for Y6372-100  
**Concentration:** See labels on tube  
**Host Species:** Rabbit  
**Isotype:** IgG  
**Reactivity:** Human, Mouse, Rat  
**Immunogen:** Recombinant fusion protein containing a sequence corresponding to amino acids 1-250 of human ANAPC5 (NP\_057321.2).  
**Swiss Prot. #:** Q9UJX4  
**Calculated MW:** 85 kDa  
**Detected MW:** 85 kDa  
**Applications:** WB (1:500 - 1:2,000)  
 IP (1:50 - 1:100)  
 IHC (1:50 - 1:200)  
 IF (not tested)  
 Note: Antibody dilution should be optimized by users.

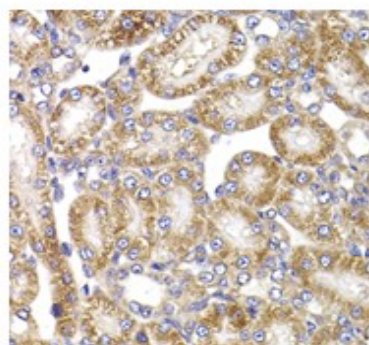
**Images:**



Immunoblotting 25 µg whole cell extracts of various cell lines using ANAPC5 antibody (Y6372) at 1:1,000 dilution.



Immunoprecipitation of 200 µg MCF7 cell extracts using 3 µg ANAPC5 antibody (Y6372). Immunoblotting: same antibody at 1:1,000 dilution.



Immunohistochemistry of paraffin-embedded rat kidney using ANAPC5 antibody (Y6372) at 1:100 dilution.

<b>Purification:</b>	Protein A or G affinity purification
<b>Buffer:</b>	PBS with 0.02% sodium azide, 50% glycerol, pH7.3
<b>Storage:</b>	Store at -20°C. Centrifuge to maximize product recovery.
<b>Background:</b>	ANAPC5 is a subunit of the anaphase-promoting complex (APC), which functions at the metaphase-to-anaphase transition of the cell cycle and is regulated by spindle checkpoint proteins. The APC is an E3 ubiquitin ligase that targets cell cycle regulatory proteins for degradation by the proteasome, thereby allowing progression through the cell cycle.
<b>Reference:</b>	1. Jorgensen PM, et al. (2001) Gene, 262, 51 - 59. 2. Turnell AS, et al. (2005) Nature 438, 690 - 695.
<b>Note:</b>	This product is for research use only.