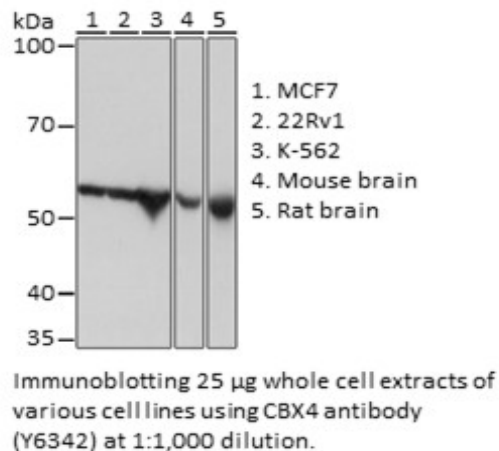


Product Name: CBX4 Rabbit mAb
Catalog #: Y6342-20; Y6342-100
Also Known As: CBX4; NBP16; PC2
Quantity: 20 µl for Y6342-20; 100 µl for Y6342-100
Concentration: See labels on tube
Host Species: Rabbit
Isotype: IgG
Reactivity: Human, Mouse, Rat
Immunogen: A synthesized peptide derived from human CBX4.
Swiss Prot. #: O00257
Calculated MW: 61 kDa
Detected MW: 61 kDa
Applications: WB (1:500 - 1:2,000)
IP (not tested)
IHC (not tested)
IF (not tested)
Note: Antibody dilution should be optimized by users.

Images:



Purification: Protein A or G affinity purification
Buffer: PBS with 0.02% sodium azide, 0.05% BSA, 50% glycerol, pH7.3
Storage: Store at -20°C. Centrifuge to maximize product recovery.
Background: CBX4 is an E3 SUMO-protein ligase which facilitates SUMO1 conjugation by UBE21, and its function influences EMT, DNA damage response, tumor angiogenesis, and self-renewal. CBX4 is a component of the PRC1 complex, which together with Ring1 strongly enhances the E3 ubiquitin ligase activity of the Ring2 catalytic subunit.
Reference: 1. Satijn DPE, et al. (1997) Mol Cell Biol 17, 6076 - 6086.
2. Cao R, et al. (2005) Mol Cell 20, 845 - 854.
Note: This product is for research use only.

