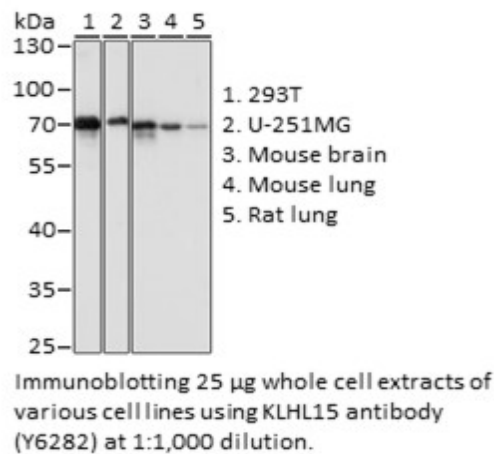


Product Name: KLHL15 Rabbit pAb
Catalog #: Y6282-20; Y6282-100
Also Known As: KLHL15; HEL-S-305
Quantity: 20 µl for Y6282-20; 100 µl for Y6282-100
Concentration: See labels on tube
Host Species: Rabbit
Isotype: IgG
Reactivity: Human, Mouse, Rat
Immunogen: Recombinant fusion protein containing a sequence corresponding to amino acids 1-300 of human KLHL15 (NP_085127.2).
Swiss Prot. #: Q96M94
Calculated MW: 69 kDa
Detected MW: 69 kDa
Applications: WB (1:500 - 1:2,000)
IP (not tested)
IHC (not tested)
IF (not tested)
Note: Antibody dilution should be optimized by users.

Images:



Purification: Protein A or G affinity purification
Buffer: PBS with 0.02% sodium azide, 50% glycerol, pH7.3
Storage: Store at -20°C. Centrifuge to maximize product recovery.
Background: KLHL15 is a member of the kelch-like family of proteins that share a common domain structure consisting of an N-terminal broad-complex, tramtrack, bric-a-brac/poxvirus and zinc finger domain and C-terminal kelch repeat motifs. Dimeric KLHL15 functions as a substrate adaptor for a CUL3-containing E3 ubiquitin ligase.
Reference: 1. Nagase T, et al. (2000) DNA Res 7, 347 - 355.
2. Furukawa M, et al. (2003) Nat Cell Biol 5, 1001 - 1007.
Note: This product is for research use only.

