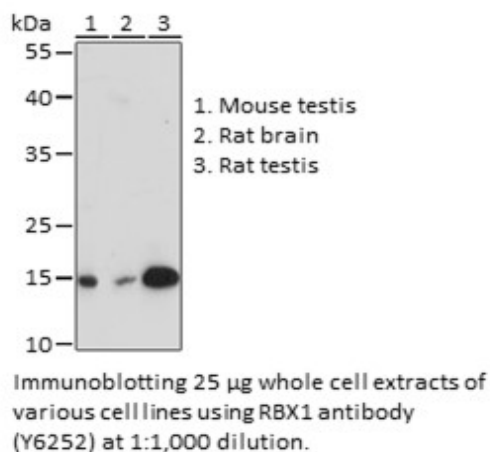


**Product Name:** RBX1 Rabbit pAb  
**Catalog #:** Y6252-20; Y6252-100  
**Also Known As:** RBX1; BA554C12.1; RNF75; ROC1  
**Quantity:** 20 µl for Y6252-20; 100 µl for Y6252-100  
**Concentration:** See labels on tube  
**Host Species:** Rabbit  
**Isotype:** IgG  
**Reactivity:** Mouse, Rat  
**Immunogen:** A synthetic peptide corresponding to a sequence within amino acids 1-100 of human RBX1 (NP\_055063.1).  
**Swiss Prot. #:** P62877  
**Calculated MW:** 12 kDa  
**Detected MW:** 12 kDa  
**Applications:** WB (1:500 - 1:2,000)  
 IP (not tested)  
 IHC (not tested)  
 IF (not tested)  
 Note: Antibody dilution should be optimized by users.

**Images:**



**Purification:** Protein A or G affinity purification  
**Buffer:** PBS with 0.02% sodium azide, 50% glycerol, pH7.3  
**Storage:** Store at -20°C. Centrifuge to maximize product recovery.  
**Background:** RBX1 is an essential component of two distinct but structurally related E3 ubiquitin ligase complexes, the SCF complex and the CBC (VHL) complex. RBX1 mediates the neddylation of CUL1, which activates SCF E3 ligase by facilitating the ubiquitin transfer from E2 to substrates. The RING finger domain of RBX1 is required for ubiquitin ligation. Two evolutionarily conserved mammalian RBX family members, RBX1 and RBX2, have been identified.  
**Reference:** 1. Zheng N, et al. (2002) Nature 416, 703 - 709.  
 2. Kamura T, et al. (1999) Genes Dev 13, 2928 - 2933.  
**Note:** This product is for research use only.