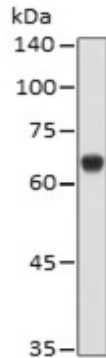
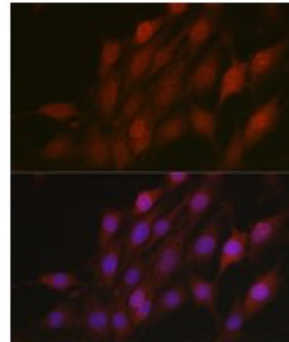


Product Name: Beta-TRCP Rabbit pAb
Catalog #: Y6242-20; Y6242-100
Also Known As: BTRC; BETA-TRCP; FBXW1A; FBXW1; FBXW1A; FWD1; bTrCP; bTrCP1; betaTrCP; Beta-TRCP
Quantity: 20 µl for Y6242-20; 100 µl for Y6242-100
Concentration: See labels on tube
Host Species: Rabbit
Isotype: IgG
Reactivity: Human, Mouse, Rat
Immunogen: Recombinant fusion protein containing a sequence corresponding to amino acids 50-340 of human Beta-TRCP (NP_378663.1.)
Swiss Prot. #: Q9Y297
Calculated MW: 68 kDa
Detected MW: 65 kDa
Applications: WB (1:500 - 1:2,000)
IHC (1:50 - 1:200)
IF (1:50 - 1:100)
IP (not tested)
Note: Antibody dilution should be optimized by users.

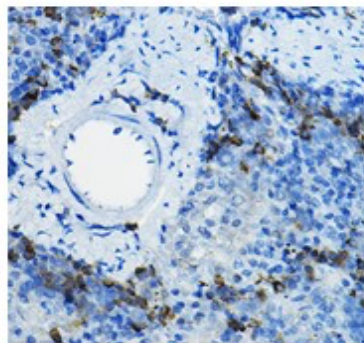
Images:



Immunoblotting 25 µg whole cell extracts of U-251MG cell line using Beta-TRCP antibody (Y6242) at 1:1,000 dilution.



Immunofluorescence of C6 cells using Beta-TRCP antibody (Y6242) at 1:100 dilution. Blue: DAPI nuclear staining.



Immunohistochemistry of paraffin-embedded mouse spleen using Beta-TRCP antibody (Y6242) at 1:100 dilution.

- Purification:** Protein A or G affinity purification
- Buffer:** PBS with 0.02% sodium azide, 50% glycerol, pH7.3
- Storage:** Store at -20°C. Centrifuge to maximize product recovery.
- Background:** BTRC is a substrate recognition component of a SCF (SKP1-CUL1-F-box protein) E3 ubiquitin-protein ligase complex which mediates the ubiquitination and subsequent proteasomal degradation of target proteins. Recognizes and binds to phosphorylated target proteins.
- Reference:**
1. Margottin F, et al. (1998) Mol Cell 1, 565 - 574.
 2. Bour S, et al. (2001) J Biol Chem 276, 15920 - 15928.
- Note:** This product is for research use only.