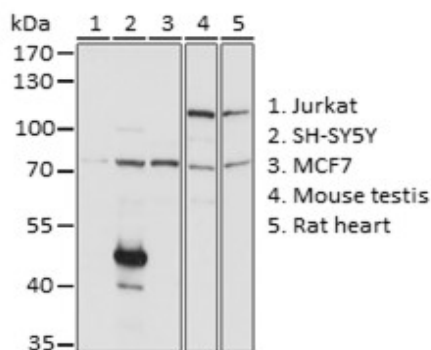
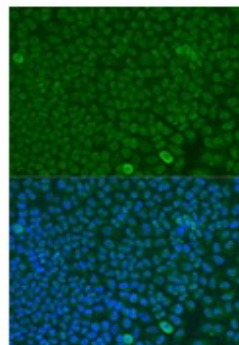


Product Name: FBXW7 Rabbit pAb
Catalog #: Y5712-20; Y5712-100
Also Known As: FBXW7; AGO; CDC4; FBW6; FBW7; FBX30; FBXO30; FBXW6; SEL10; hAgo; hCdc4
Quantity: 20 µl for Y5712-20; 100 µl for Y5712-100
Concentration: See labels on tube
Host Species: Rabbit
Isotype: IgG
Reactivity: Human, Mouse, Rat
Immunogen: Recombinant fusion protein containing a sequence corresponding to amino acids 408-707 of human FBXW7 (NP_361014.1).
Swiss Prot. #: Q969H0
Calculated MW: 79 kDa
Detected MW: 79 kDa
Applications: WB (1:500 - 1:2,000)
 IHC (1:50 - 1:200)
 IF (1:50 - 1:200)
 IP (not tested)
 Note: Antibody dilution should be optimized by users.

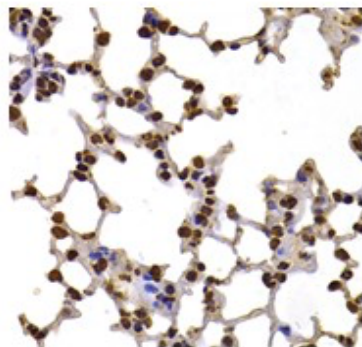
Images:



Immunoblotting 25 µg whole cell extracts of various cell lines using FBXW7 antibody (Y5712) at 1:1,000 dilution.



Immunofluorescence of U2OS cells using FBXW7 antibody (Y5712) at 1:100 dilution. Blue: DAPI nuclear staining.



Immunohistochemistry of paraffin-embedded mouse lung using FBXW7 antibody (Y5712) at 1:100 dilution.

Purification:	Protein A or G affinity purification
Buffer:	PBS with 0.02% sodium azide, 50% glycerol, pH7.3
Storage:	Store at -20°C. Centrifuge to maximize product recovery.
Background:	FBXW7 is a member of the Fbws class of the F-box protein family. The F-box proteins constitute one of the four subunits of the ubiquitin protein ligase complexes called SCFs (SKP1-cullin-F-box), which function in phosphorylation-dependent ubiquitination. The F-box proteins are divided into three classes: Fbws containing WD-40 domains, Fbls containing leucine-rich repeats, and Fbxs containing either different protein-protein interaction modules or no recognizable motifs.
Reference:	<ol style="list-style-type: none">1. Gupta - Rossi N, et al. (2001) J Biol Chem 276, 34371 - 34378.2. Yada M, et al. (2004) EMBO J 23, 2116 - 2125.
Note:	This product is for research use only.