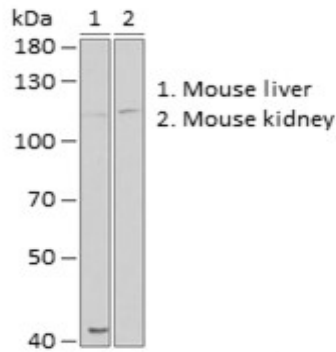
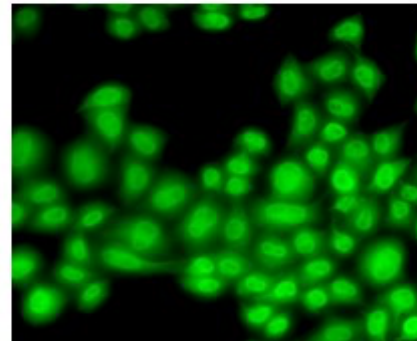


Product Name: Cullin 4B Rabbit pAb
Catalog #: Y5552-20; Y5552-100
Also Known As: CUL4B; CUL-4B; MRXHF2; MRXS15; MRXSC; SFM2; cullin-4B
Quantity: 20 µl for Y5552-20; 100 µl for Y5552-100
Concentration: See labels on tube
Host Species: Rabbit
Isotype: IgG
Reactivity: Human, Mouse
Immunogen: Recombinant fusion protein containing a sequence corresponding to amino acids 1-200 of human Cullin 4B (NP_003579.3).
Swiss Prot. #: Q13620
Calculated MW: 103 kDa
Detected MW: 115 kDa
Applications: WB (1:500 - 1:2,000)
IHC (1:50 - 1:200)
IF (1:50 - 1:200)
IP (not tested)
Note: Antibody dilution should be optimized by users.

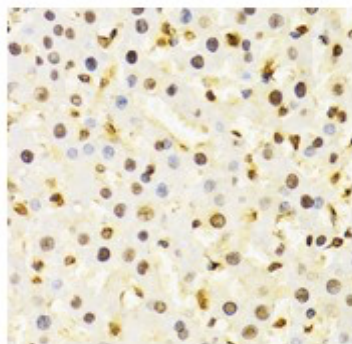
Images:



Immunoblotting 25 µg whole cell extracts of various cell lines using Cullin 4B antibody (Y5552) at 1:1,000 dilution.



Immunofluorescence of U2OS cells using Cullin 4B antibody (Y5552) at 1:100 dilution.



Immunohistochemistry of paraffin-embedded rat liver using Cullin 4B antibody (Y5552) at 1:100 dilution.

- Purification:** Protein A or G affinity purification
- Buffer:** PBS with 0.02% sodium azide, 50% glycerol, pH7.3
- Storage:** Store at -20°C. Centrifuge to maximize product recovery.
- Background:** Cullin 4 is a member of the cullin family of related ubiquitin ligases. A pair of mammalian Cullin 4 proteins - Cullin 4A and Cullin 4B - has been identified. Cullin 4B may act within the complex as a scaffold protein, contributing to catalysis through positioning of the substrate and the ubiquitin-conjugating enzyme.
- Reference:**
1. Kipreos ET, et al. (1996) Cell 85, 829 - 839.
 2. Zhong W, et al. (2003) Nature 423, 885 - 889.
- Note:** This product is for research use only.

