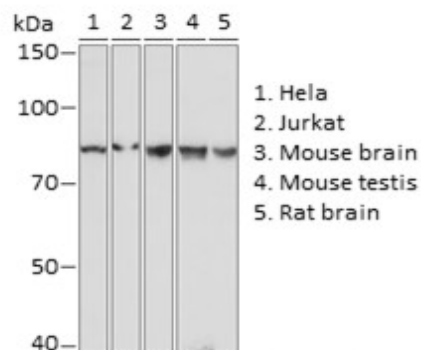
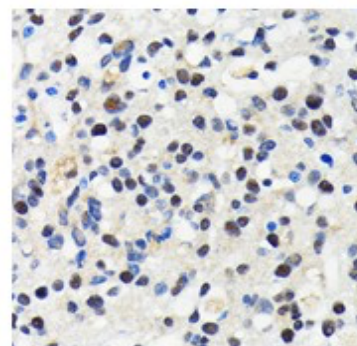


Product Name: Cullin 3 Rabbit mAb
Catalog #: Y5520-20; Y5520-100
Also Known As: CUL-3; PHA2E; CUL3; Cullin 3; cullin-3
Quantity: 20 µl for Y5520-20; 100 µl for Y5520-100
Concentration: See labels on tube
Host Species: Rabbit
Isotype: IgG
Reactivity: Human, Mouse, Rat
Immunogen: A synthesized peptide derived from human Cullin 3.
Swiss Prot. #: Q13618
Calculated MW: 89 kDa
Detected MW: 89 kDa
Applications: WB (1:500 - 1:2,000)
IHC (1:50 - 1:200)
IP (not tested)
IF (not tested)
Note: Antibody dilution should be optimized by users.

Images:



Immunoblotting 25 µg whole cell extracts of various cell lines using Cullin 3 antibody (Y5520) at 1:1,000 dilution.



Immunohistochemistry of paraffin-embedded rat brain using Cullin 3 antibody (Y5520) at 1:100 dilution.

Purification: Protein A or G affinity purification
Buffer: PBS with 0.02% sodium azide, 0.05% BSA, 50% glycerol, pH7.3
Storage: Store at -20°C. Centrifuge to maximize product recovery.
Background: Cullin 3 is a member of the cullin-based ubiquitin ligase family. By interacting with Hrt1 and BTB domain containing proteins, Cullin 3-based E3 ligases have been shown to target many substrates for ubiquitination involved in cell cycle progression, transcription, development and differentiation.
Reference: 1. Kipreos ET, et al. (1996) Cell 85 (6), 829 - 839.
2. Michel JJ and Xiong Y, (1998) Cell Growth Differ 9, 435 - 449.
Note: This product is for research use only.