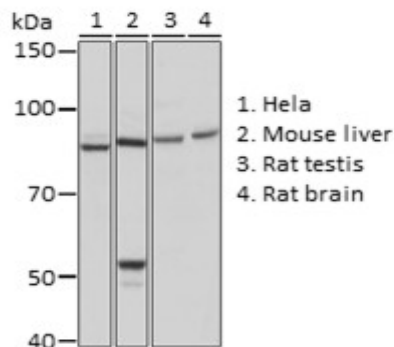
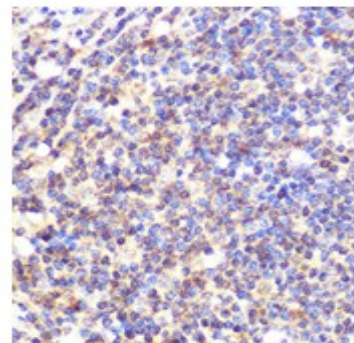


Product Name: Cullin 2 Rabbit mAb
Catalog #: Y5510-20; Y5510-100
Also Known As: CUL2; cullin-2
Quantity: 20 µl for Y5510-20; 100 µl for Y5510-100
Concentration: See labels on tube
Host Species: Rabbit
Isotype: IgG
Reactivity: Human, Mouse, Rat
Immunogen: A synthesized peptide derived from human Cullin 2.
Swiss Prot. #: Q13617
Calculated MW: 87 kDa
Detected MW: 87 kDa
Applications: WB (1:500 - 1:2,000)
IHC (1:50 - 1:200)
IP (not tested)
IF (not tested)
Note: Antibody dilution should be optimized by users.

Images:



Immunoblotting 25 µg whole cell extracts of various cell lines using Cullin 2 antibody (Y5510) at 1:1,000 dilution.



Immunohistochemistry of paraffin-embedded human appendix using Cullin 2 antibody (Y5510) at 1:100 dilution.

Purification: Protein A or G affinity purification
Buffer: PBS with 0.02% sodium azide, 0.05% BSA, 50% glycerol, pH7.3
Storage: Store at -20°C. Centrifuge to maximize product recovery.
Background: Cullin 2 is a core component of multi-subunit cullin-RING ligases (CRLs), in which Cullin 2 functions as a scaffold protein that recruits the catalytic Ring box protein Rbx1, and the substrate adaptors Elongin B and C.
Reference: 1. Kipreos ET, et al. (1996) Cell 85 (6), 829 - 839.
2. Michel JJ and Xiong Y, (1998) Cell Growth Differ 9, 435 - 449.
Note: This product is for research use only.