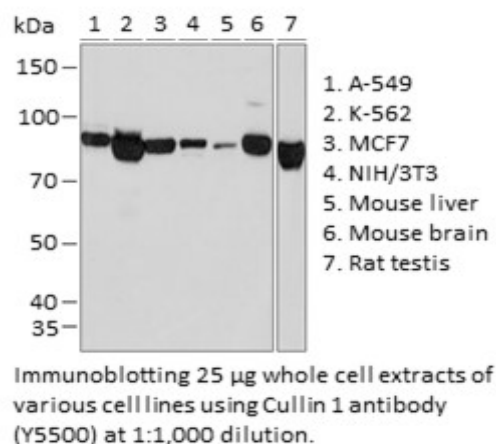


Product Name: Cullin 1 Rabbit mAb
Catalog #: Y5500-20; Y5500-100
Also Known As: CUL1; Cullin 1; cullin-1; MGC149834; MGC149835
Quantity: 20 µl for Y5500-20; 100 µl for Y5500-100
Concentration: See labels on tube
Host Species: Rabbit
Isotype: IgG
Reactivity: Human, Mouse, Rat
Immunogen: A synthesized peptide derived from human Cullin 1.
Swiss Prot. #: Q13616
Calculated MW: 90 kDa
Detected MW: 90 kDa
Applications: WB (1:500 - 1:2,000)
 IP (not tested)
 IHC (not tested)
 IF (not tested)
 Note: Antibody dilution should be optimized by users.

Images:



Purification: Protein A or G affinity purification
Buffer: PBS with 0.02% sodium azide, 0.05% BSA, 50% glycerol, pH7.3
Storage: Store at -20°C. Centrifuge to maximize product recovery.
Background: Cullin 1 is a core component of multiple cullin-RING-based SCF (SKP1-CUL1-F-box protein) E3 ubiquitin-protein ligase complexes, which mediate ubiquitination of proteins involved in cell cycle progression, signal transduction and transcription. In particular, Cullin 1 has been shown to mediate ubiquitin dependent degradation of p21/Waf1/Cip1, cyclin D and IκappaB-α.
Reference: 1. Kipreos ET, et al. (1996) Cell 85 (6), 829 - 839.
 2. Michel JJ and Xiong Y, (1998) Cell Growth Differ 9, 435 - 449.
Note: This product is for research use only.