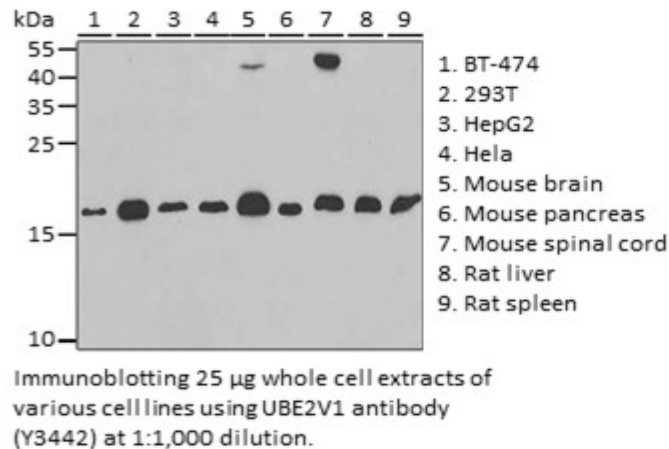


**Product Name:** UBE2V1 Rabbit pAb  
**Catalog #:** Y3442-20; Y3442-100  
**Also Known As:** UBE2V1; CIR1; CROC-1; CROC1; UBE2V; UEV-1; UEV1; UEV1A  
**Quantity:** 20 µl for Y3442-20; 100 µl for Y3442-100  
**Concentration:** See labels on tube  
**Host Species:** Rabbit  
**Isotype:** IgG  
**Reactivity:** Human, Mouse, Rat  
**Immunogen:** Recombinant fusion protein containing a sequence corresponding to amino acids 1-147 of human UBE2V1 (NP\_001027459.1).  
**Swiss Prot. #:** Q13404  
**Calculated MW:** 16 kDa  
**Detected MW:** 16 kDa  
**Applications:** WB (1:500 - 1:2,000)  
IP (not tested)  
IHC (not tested)  
IF (not tested)  
Note: Antibody dilution should be optimized by users.

**Images:**



**Purification:** Protein A or G affinity purification  
**Buffer:** PBS with 0.02% sodium azide, 50% glycerol, pH7.3  
**Storage:** Store at -20°C. Centrifuge to maximize product recovery.  
**Background:** UBE2V1 is a ubiquitin-conjugating enzyme variant. It has no ubiquitin ligase activity on its own. The UBE2V1-UBE2N heterodimer catalyzes the synthesis of non-canonical poly-ubiquitin chains that are linked through Lys-63.  
**Reference:** 1. Rothofsky ML and Lin SL, (1997) Gene 195, 141 - 149.  
2. Deng L, et al. (2000) Cell 103, 351 - 361.  
**Note:** This product is for research use only.