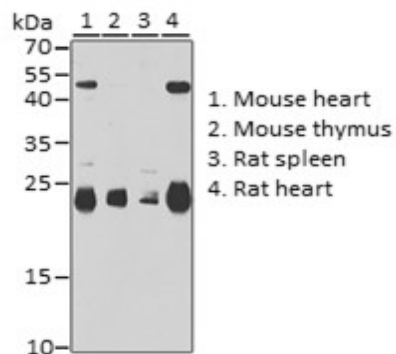


**Product Name:** UBE2T Rabbit pAb  
**Catalog #:** Y3432-20; Y3432-100  
**Also Known As:** UBE2T; FANCT; HSPC150; PIG50  
**Quantity:** 20 µl for Y3432-20; 100 µl for Y3432-100  
**Concentration:** See labels on tube  
**Host Species:** Rabbit  
**Isotype:** IgG  
**Reactivity:** Human, Mouse, Rat  
**Immunogen:** Recombinant fusion protein containing a sequence corresponding to amino acids 1-197 of human UBE2T (NP\_054895.1).  
**Swiss Prot. #:** Q9NPD8  
**Calculated MW:** 22 kDa  
**Detected MW:** 22 kDa  
**Applications:** WB (1:500 - 1:2,000)  
IP (not tested)  
IHC (not tested)  
IF (not tested)  
Note: Antibody dilution should be optimized by users.

**Images:**



Immunoblotting 25 µg whole cell extracts of various cell lines using UBE2T antibody (Y3432) at 1:1,000 dilution.

**Purification:** Protein A or G affinity purification  
**Buffer:** PBS with 0.02% sodium azide, 50% glycerol, pH7.3  
**Storage:** Store at -20°C. Centrifuge to maximize product recovery.  
**Background:** UBE2T is a member of the E2 ubiquitin-conjugating enzyme family. Accepts ubiquitin from E1 and catalyzes its covalent attachment to other proteins. Catalyzes monoubiquitination. Involved in mitomycin-C (MMC)-induced DNA repair.  
**Reference:** 1. Zhang QH, et al. (2000) Genome Res 10, 1546 - 1560.  
2. Machida YJ, et al. (2006) Mol Cell 23, 589 - 596.  
**Note:** This product is for research use only.