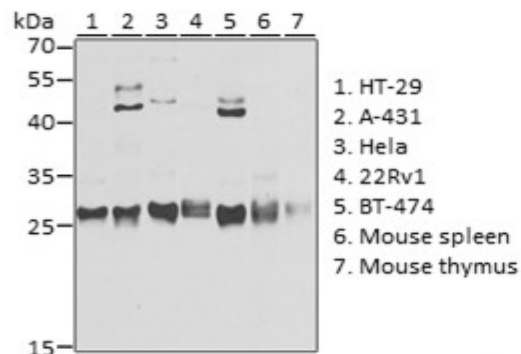
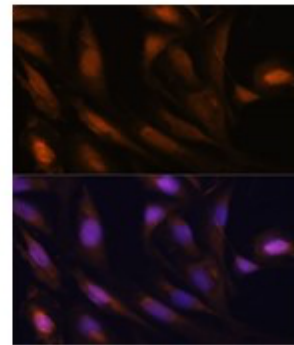


Product Name: UBE2S Rabbit pAb
Catalog #: Y3422-20; Y3422-100
Also Known As: UBE2S; E2-EPF; E2EPF; EPF5
Quantity: 20 µl for Y3422-20; 100 µl for Y3422-100
Concentration: See labels on tube
Host Species: Rabbit
Isotype: IgG
Reactivity: Human, Mouse, Rat
Immunogen: Recombinant fusion protein containing a sequence corresponding to amino acids 122-221 of human UBE2S (NP_055316.2).
Swiss Prot. #: Q16763
Calculated MW: 23 kDa
Detected MW: 23 kDa
Applications: WB (1:500 - 1:2,000)
 IHC (1:50 - 1:200)
 IF (1:50 - 1:200)
 IP (not tested)
 Note: Antibody dilution should be optimized by users.

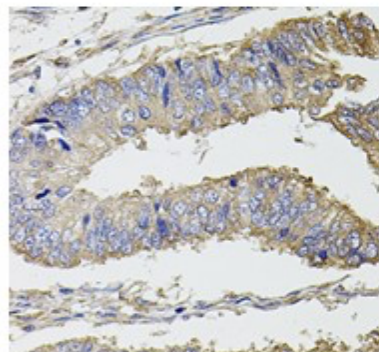
Images:



Immunoblotting 25 µg whole cell extracts of various cell lines using UBE2S antibody (Y3422) at 1:1,000 dilution.



Immunofluorescence of U2OS cells using UBE2S antibody (Y3422) at 1:100 dilution. Blue: DAPI nuclear staining.



Immunohistochemistry of paraffin-embedded human colon carcinoma using UBE2S antibody (Y3422) at 1:100 dilution.

- Purification:** Protein A or G affinity purification
- Buffer:** PBS with 0.02% sodium azide, 50% glycerol, pH7.3
- Storage:** Store at -20°C. Centrifuge to maximize product recovery.
- Background:** UBE2S is a member of the E2 ubiquitin-conjugating enzyme family. Accepts ubiquitin from E1 and catalyzes its covalent attachment to other proteins. Catalyzes 'Lys-11'-linked polyubiquitination. Acts as an essential factor of the anaphase promoting complex/cyclosome (APC/C), a cell cycle-regulated ubiquitin ligase that controls progression through mitosis.
- Reference:**
1. Liu Z, et al. (1992) J Biol Chem 267(22), 15829 - 15835.
 2. Garnett MJ, et al. (2009) Nat Cell Biol 11, 1363 - 1369.
- Note:** This product is for research use only.

