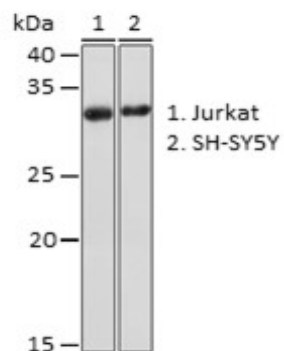


**Product Name:** UBE2R1 Rabbit mAb  
**Catalog #:** Y3410-20; Y3410-100  
**Also Known As:** CDC34; E2-CDC34; UBC3; UBCH3; UBE2R1  
**Quantity:** 20 µl for Y3410-20; 100 µl for Y3410-100  
**Concentration:** See labels on tube  
**Host Species:** Rabbit  
**Isotype:** IgG  
**Reactivity:** Human, Mouse, Rat  
**Immunogen:** A synthesized peptide derived from human UBE2R1 (Cdc34).  
**Swiss Prot. #:** P49427  
**Calculated MW:** 35 kDa  
**Detected MW:** 32 kDa  
**Applications:** WB (1:500 - 1:2,000)  
 IP (not tested)  
 IHC (not tested)  
 IF (not tested)  
 Note: Antibody dilution should be optimized by users.

**Images:**



**Purification:** Protein A or G affinity purification  
**Buffer:** PBS with 0.02% sodium azide, 0.05% BSA, 50% glycerol, pH7.3  
**Storage:** Store at -20°C. Centrifuge to maximize product recovery.  
**Background:** UBE2R1 (CDC34) is a member of the ubiquitin-conjugating enzyme (E2) family, which catalyzes the covalent attachment of ubiquitin to other proteins. UBE2R1 is required for ubiquitin-mediated degradation of cell cycle G1 regulators, and for the initiation of DNA replication.  
**Reference:** 1. Goebel MG, et al. (1988) Science 241 (4871), 1331 - 1335.  
 2. Plon SE, et al. (1993) Proc Natl Acad Sci USA 90(22), 10484 - 10488.  
**Note:** This product is for research use only.