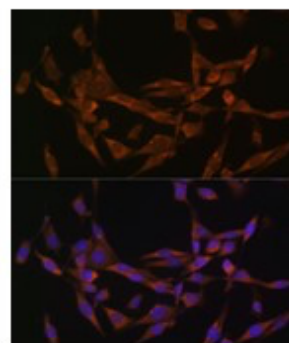
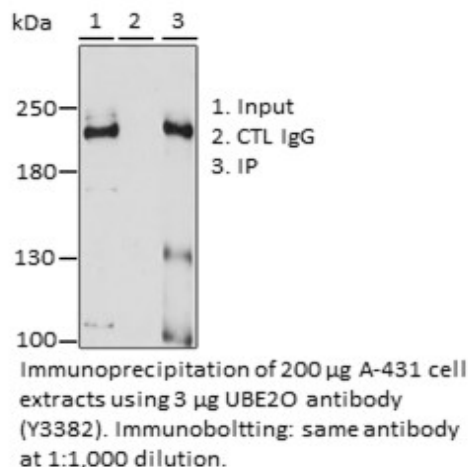
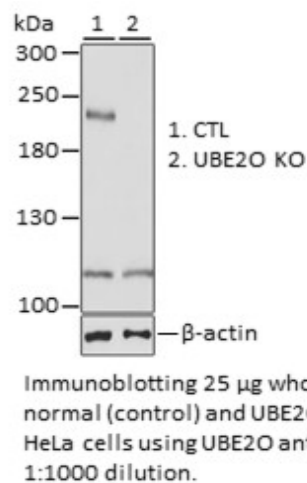
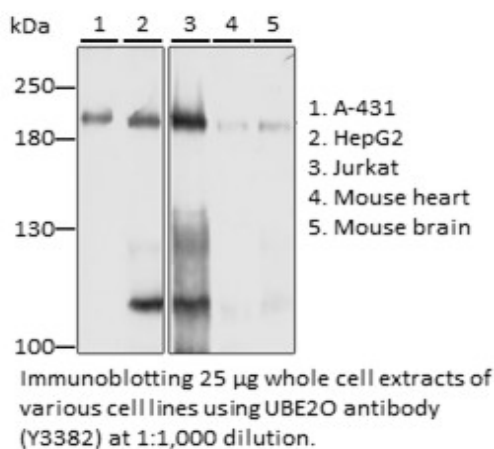


**Product Name:** UBE2O Rabbit pAb [KO Validated]  
**Catalog #:** Y3382-20; Y3382-100  
**Also Known As:** UBE2O; E2-230K  
**Quantity:** 20 µl for Y3382-20; 100 µl for Y3382-100  
**Concentration:** See labels on tube  
**Host Species:** Rabbit  
**Isotype:** IgG  
**Reactivity:** Human, Mouse, Rat  
**Immunogen:** Recombinant fusion protein containing a sequence corresponding to amino acids 1073-1292 of human UBE2O (NP\_071349.3.)  
**Swiss Prot. #:** Q9C0C9  
**Calculated MW:** 141 kDa  
**Detected MW:** 200 kDa  
**Applications:** WB (1:1000 - 1:4,000)  
 IP (1:50 - 1:200)  
 IF (1:50 - 1:200)  
 IHC (not tested)  
 Note: Antibody dilution should be optimized by users.

**Images:**



|                      |   |
|----------------------|---|
| <b>Purification:</b> | Protein A or G affinity purification  |
| <b>Buffer:</b>       | PBS with 0.02% sodium azide, 50% glycerol, pH7.3  |
| <b>Storage:</b>      | Store at -20°C. Centrifuge to maximize product recovery.  |
| <b>Background:</b>   | UBE2O is a E2/E3 hybrid ubiquitin-protein ligase that displays both E2 and E3 ligase activities and mediates monoubiquitination of target proteins. Negatively regulates TRAF6-mediated NF-kappa-B activation independently of its E2 activity. |
| <b>Reference:</b>    | <ol style="list-style-type: none"><li>1. Yokota T, et al. (2001) Gene 267, 95 - 100.</li><li>2. Zhang X, et al. (2013) EMBO J 32, 996 - 1007.</li><li>3. Mashtalir N, et al. (2014) Mol Cell 54, 392 - 406.</li></ol>                           |
| <b>Note:</b>         | This product is for research use only.  |