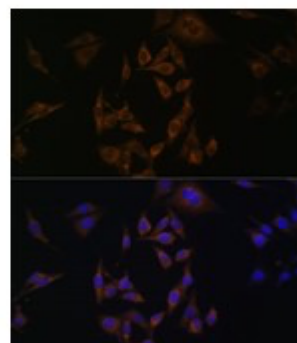
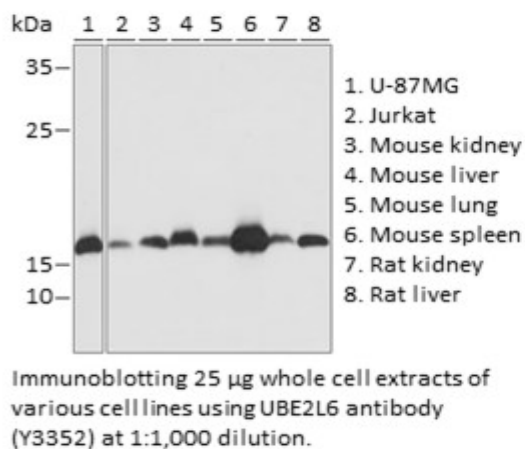


**Product Name:** UBE2L6 Rabbit pAb  
**Catalog #:** Y3352-20; Y3352-100  
**Also Known As:** UBE2L6; RIG-B; UBCH8  
**Quantity:** 20 µl for Y3352-20; 100 µl for Y3352-100  
**Concentration:** See labels on tube  
**Host Species:** Rabbit  
**Isotype:** IgG  
**Reactivity:** Human, Mouse, Rat  
**Immunogen:** A synthetic peptide corresponding to a sequence within amino acids 50 to the C-terminus of human UBE2L6 (NP\_004214.1).  
**Swiss Prot. #:** O14933  
**Calculated MW:** 17 kDa  
**Detected MW:** 17 kDa  
**Applications:** WB (1:500 - 1:2,000)  
 IF (1:50 - 1:200)  
 IP (not tested)  
 IHC (not tested)  
 Note: Antibody dilution should be optimized by users.

**Images:**



**Purification:** Protein A or G affinity purification  
**Buffer:** PBS with 0.02% sodium azide, 50% glycerol, pH7.3  
**Storage:** Store at -20°C. Centrifuge to maximize product recovery.  
**Background:** UBE2L6 is a member of the E2 ubiquitin-conjugating enzyme family. Catalyzes the covalent attachment of ubiquitin or ISG15 to other proteins. Functions in the E6/E6-AP-induced ubiquitination of p53/TP53. Promotes ubiquitination and subsequent proteasomal degradation of FLT3.  
**Reference:** 1. Zhao C, et al. (2004) Proc Natl Acad Sci USA 101, 7578 - 7582.  
 2. Takeuchi T, et al. (2005) J Biochem 138, 711 - 719.  
**Note:** This product is for research use only.