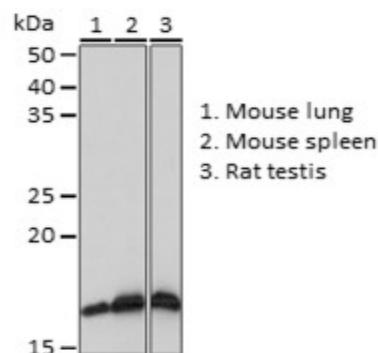
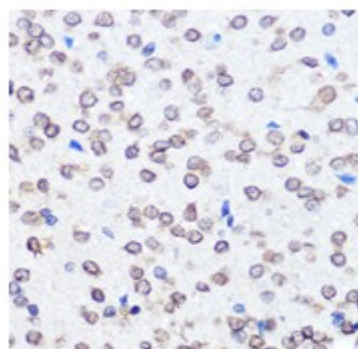


Product Name: UBE2I Rabbit mAb
Catalog #: Y3300-20; Y3300-100
Also Known As: UBE2I; C358B7.1; P18; UBC9
Quantity: 20 µl for Y3300-20; 100 µl for Y3300-100
Concentration: See labels on tube
Host Species: Rabbit
Isotype: IgG
Reactivity: Human, Mouse, Rat
Immunogen: A synthesized peptide derived from human UBE2I.
Swiss Prot. #: P63279
Calculated MW: 18 kDa
Detected MW: 18 kDa
Applications: WB (1:500 - 1:2,000)
 IHC (1:50 - 1:200)
 IP (not tested)
 IF (not tested)
 Note: Antibody dilution should be optimized by users.

Images:



Immunoblotting 25 µg whole cell extracts of various cell lines using UBE2I antibody (Y3300) at 1:1,000 dilution.



Immunohistochemistry of paraffin-embedded rat brain using UBE2I antibody (Y3300) at 1:100 dilution.

Purification: Protein A or G affinity purification
Buffer: PBS with 0.02% sodium azide, 0.05% BSA, 50% glycerol, pH7.3
Storage: Store at -20°C. Centrifuge to maximize product recovery.
Background: UBE2I is a member of the E2 ubiquitin-conjugating enzyme family that is specific for promoting protein sumoylation including SUMO1, SUMO2, SUMO3, SUMO4 and SUMO1P1/SUMO5.
Reference: 1. Wang ZY, et al. (1996) J Biol Chem 271(40), 24811 - 24816.
 2. Yasugi T and Howley PM, (1996) Nucleic Acids Res 24, 2005 - 2010.
Note: This product is for research use only.