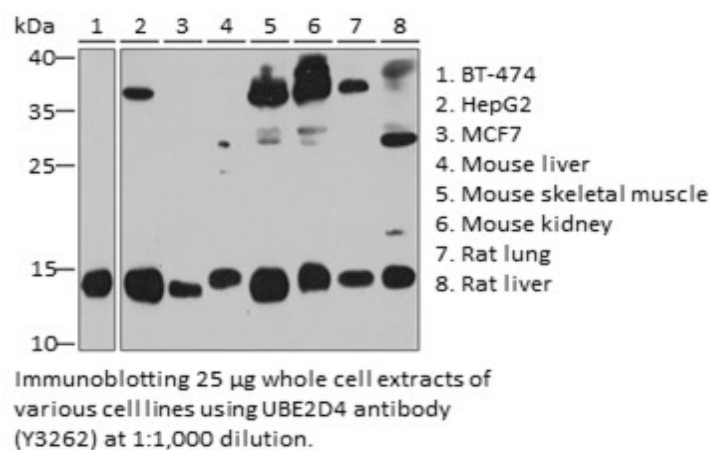


Product Name: UBE2D4 Rabbit pAb
Catalog #: Y3262-20; Y3262-100
Also Known As: UBE2D4; HBUCE1
Quantity: 20 µl for Y3262-20; 100 µl for Y3262-100
Concentration: See labels on tube
Host Species: Rabbit
Isotype: IgG
Reactivity: Human, Mouse, Rat
Immunogen: Recombinant fusion protein containing a sequence corresponding to amino acids 1-147 of human UBE2D4 (NP_057067.1)
Swiss Prot. #: Q9Y2X8
Calculated MW: 16 kDa
Detected MW: 14 kDa
Applications: WB (1:500 - 1:2,000)
 IP (not tested)
 IHC (not tested)
 IF (not tested)
 Note: Antibody dilution should be optimized by users.

Images:



Purification: Protein A or G affinity purification
Buffer: PBS with 0.02% sodium azide, 50% glycerol, pH7.3
Storage: Store at -20°C. Centrifuge to maximize product recovery.
Background: UBE2D4 is a member of the E2 ubiquitin-conjugating enzyme family. Accepts ubiquitin from E1 and catalyzes its covalent attachment to other proteins. In vitro it is able to promote polyubiquitination using all 7 ubiquitin Lys residues, but may prefer 'Lys-11' and 'Lys-48'-linked polyubiquitination.
Reference: 1. Colland F, et al. (2004) Genome Res 14(7), 1324 - 1332.
 2. Tokumoto M, et al. (2011) J Toxicol Sci 36(2), 191 - 200.
Note: This product is for research use only.