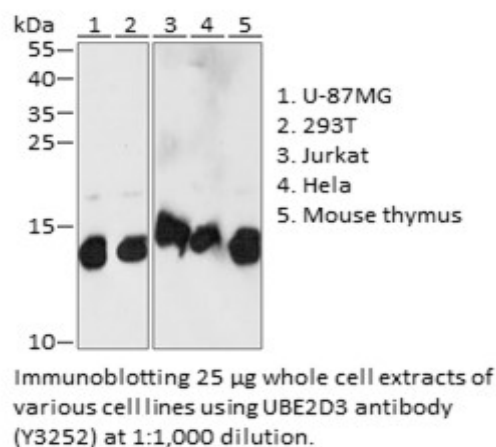


Product Name: UBE2D3 Rabbit pAb
Catalog #: Y3252-20; Y3252-100
Also Known As: UBE2D3; E2(17)KB3; UBC4/5; UBCH5C
Quantity: 20 µl for Y3252-20; 100 µl for Y3252-100
Concentration: See labels on tube
Host Species: Rabbit
Isotype: IgG
Reactivity: Human, Mouse, Rat
Immunogen: A synthetic peptide corresponding to a sequence within amino acids 1-100 of human UBE2D3 (NP_003331.1)
Swiss Prot. #: P61077
Calculated MW: 16 kDa
Detected MW: 14 kDa
Applications: WB (1:500 - 1:2,000)
 IP (not tested)
 IHC (not tested)
 IF (not tested)
 Note: Antibody dilution should be optimized by users.

Images:



Purification: Protein A or G affinity purification
Buffer: PBS with 0.02% sodium azide, 50% glycerol, pH7.3
Storage: Store at -20°C. Centrifuge to maximize product recovery.
Background: UBE2D3 is a member of the E2 ubiquitin-conjugating enzyme family. Accepts ubiquitin from E1 and catalyzes its covalent attachment to other proteins. This enzyme functions in the ubiquitination of the tumor-suppressor protein p53, which is induced by an E3 ubiquitin-protein ligase. UBE2D3 has been shown to interact with NEDD4.
Reference: 1. Jensen JP, et al. (1995) J Biol Chem 270(51), 30408 - 30414.
 2. Saville MK, et al. (2004) J Biol Chem 279, 42169 - 42181.
Note: This product is for research use only.